

天空之城16015灯光安装说明书

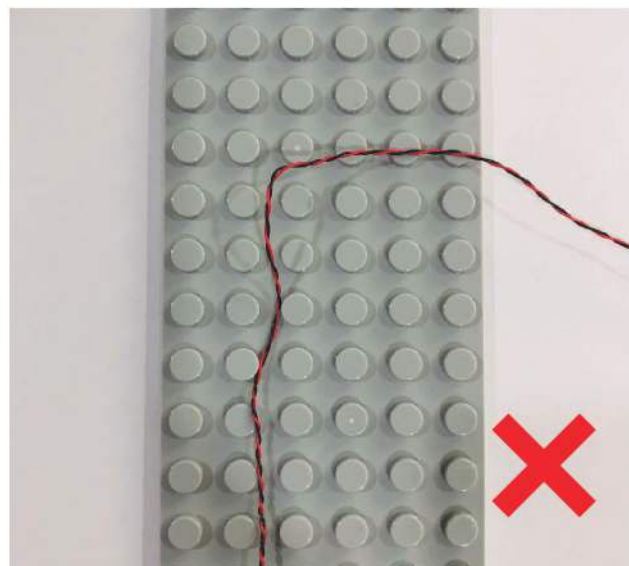
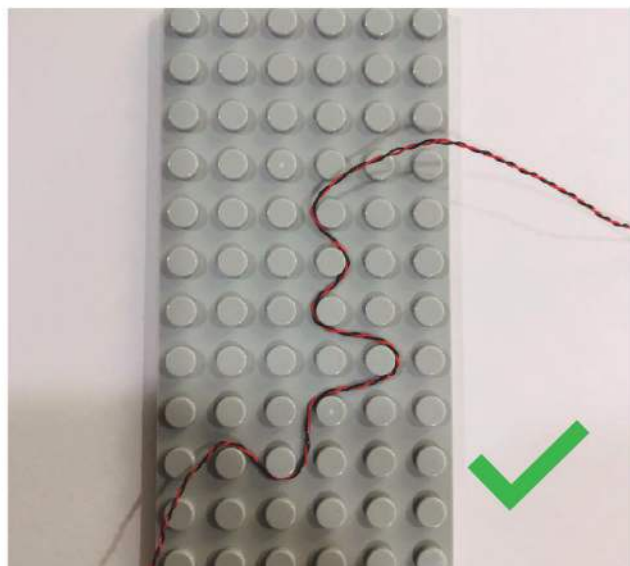


天空之城16015-灯光安装图纸

注意事项:

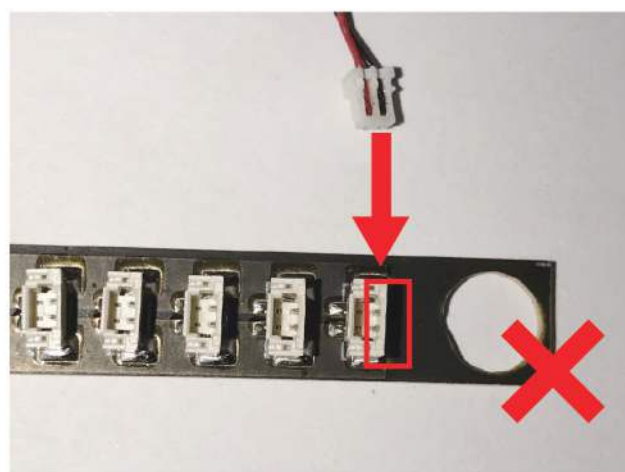
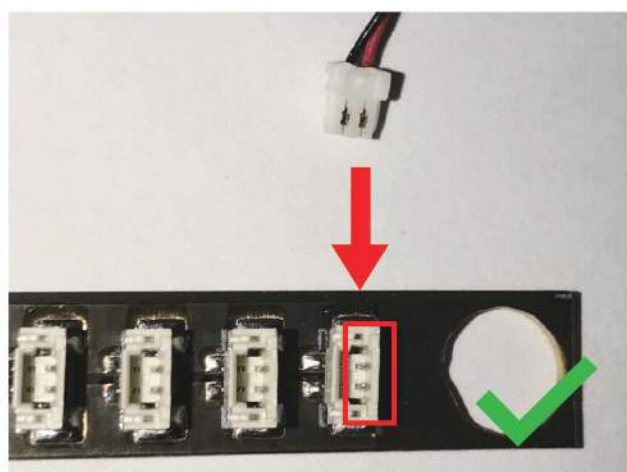
在积木件上面或下面布线

电线可布置在积木件和件之间或下面，电线要正确的按螺柱边缘走线。



电线插口连接插座

电线插口连接要格外小心，插口只能以一种方式插入。带有外露电线的插口侧应朝向焊接的=符号。若插头不易插入，请勿强行插入。错误插入会导致插口内针脚弯曲或插座过热。



在安装产品之前，必须仔细阅读灯光说明书，产品安装灯光时必须和安装产品配合进行。

装配到积木拼装说明书第274步配合安装

① 取两条暖光灯带



② 把暖光灯带的电线按下图排线



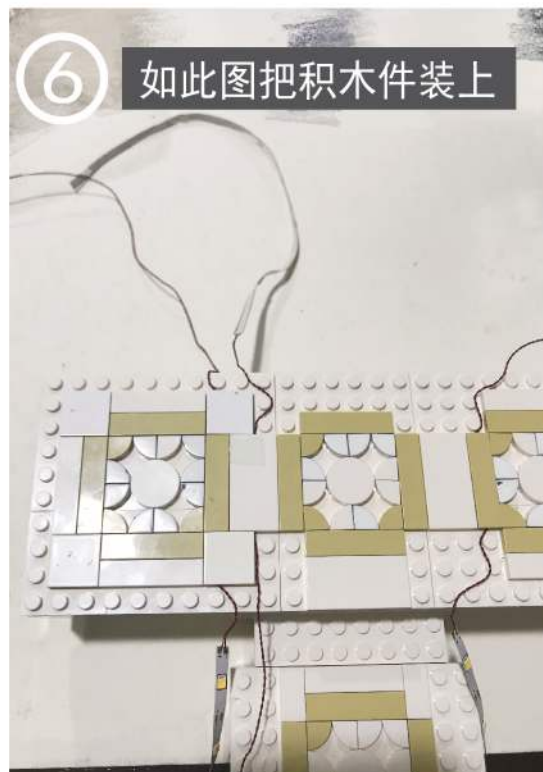
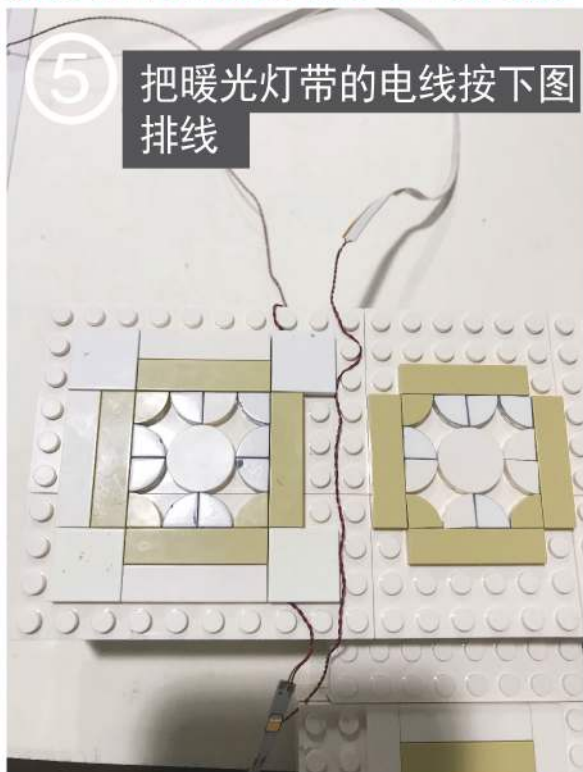
③ 如此图把积木件装上



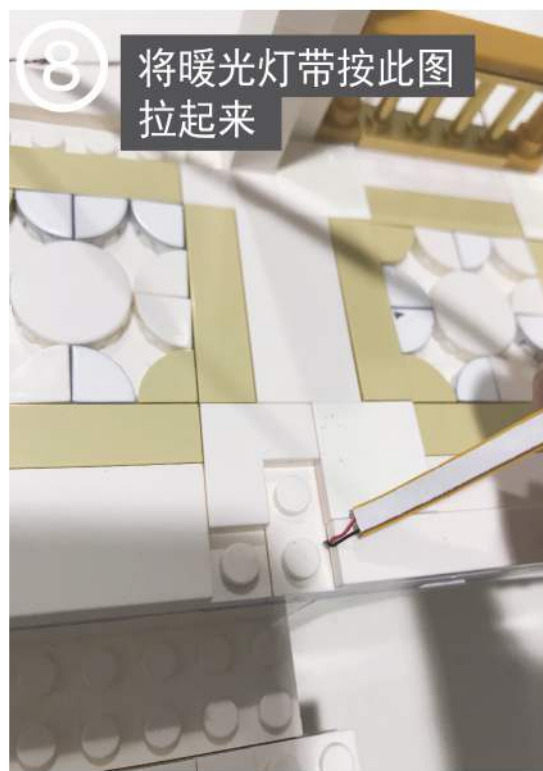
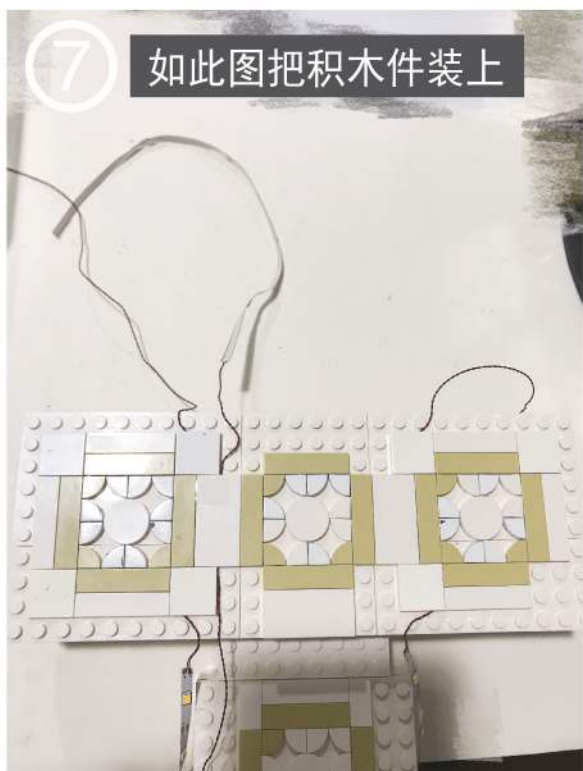
④ 再取一条暖光灯带

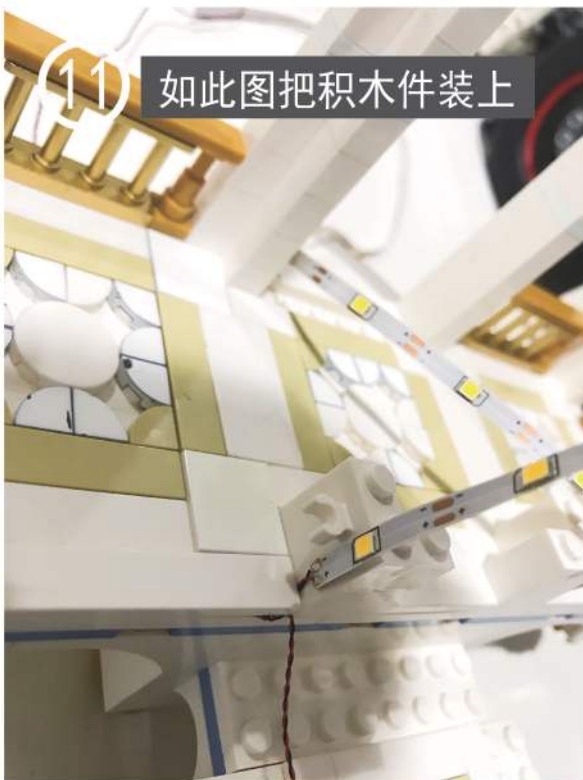


装配到积木拼装说明书第275步配合安装

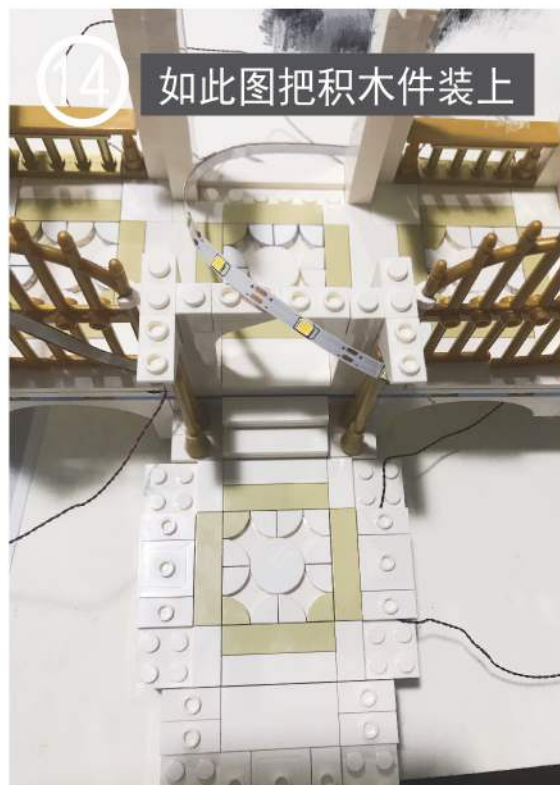


装配到积木拼装说明书第282步配合安装





装配到积木拼装说明书第296步配合安装

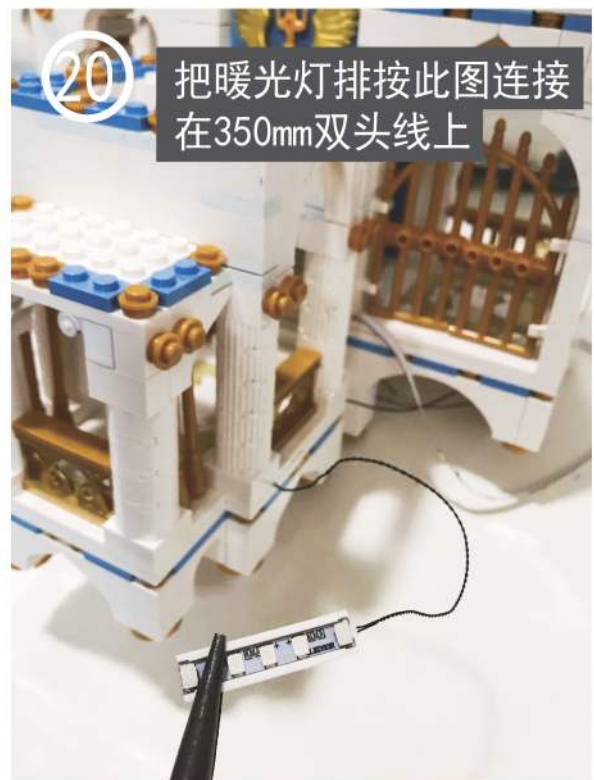


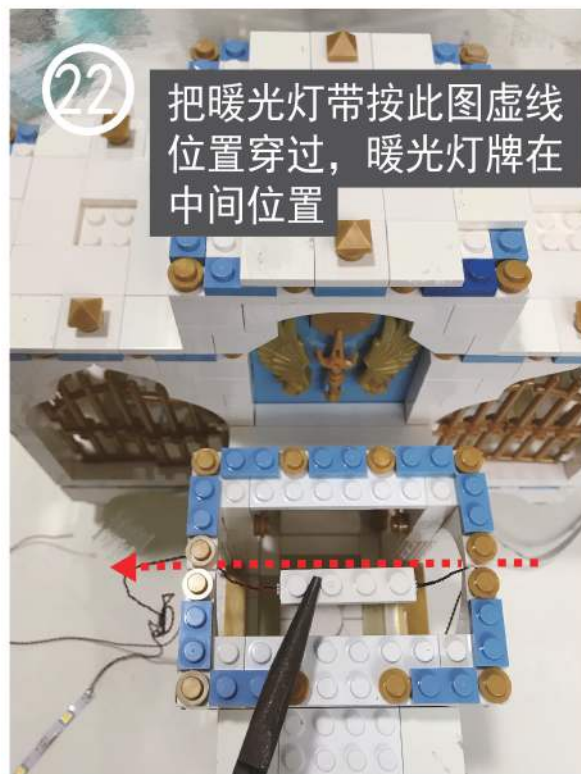
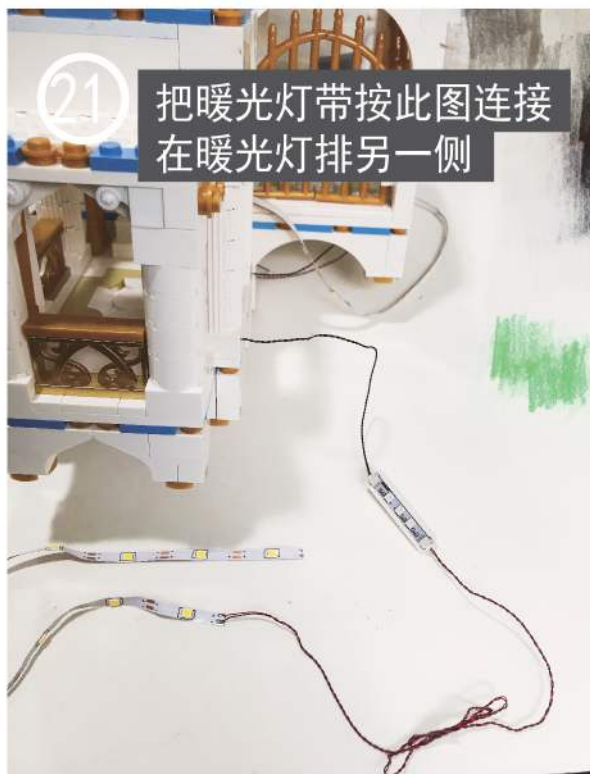
装配到积木拼装说明书第350步配合安装



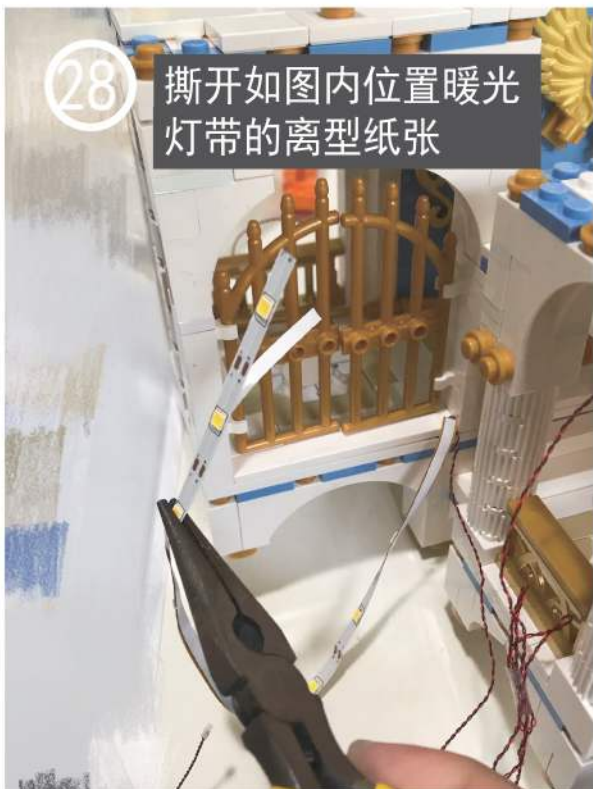


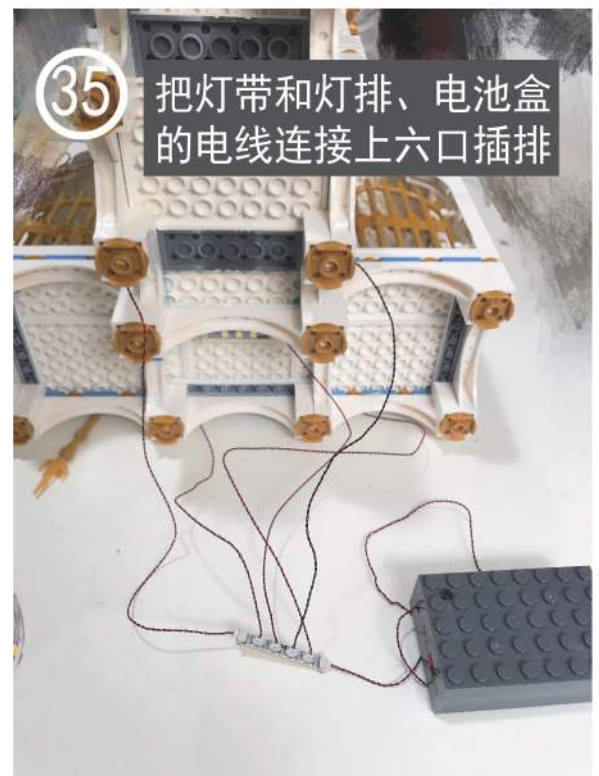
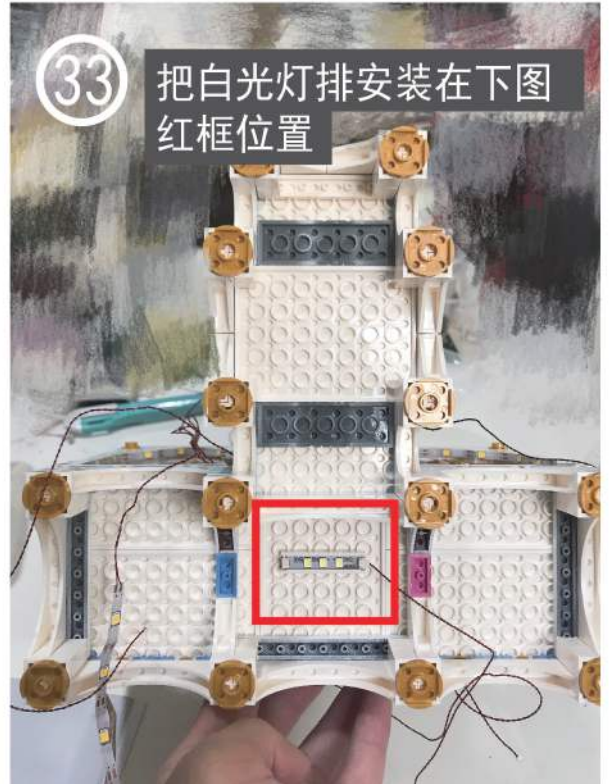
装配到积木拼装说明书第358步配合安装

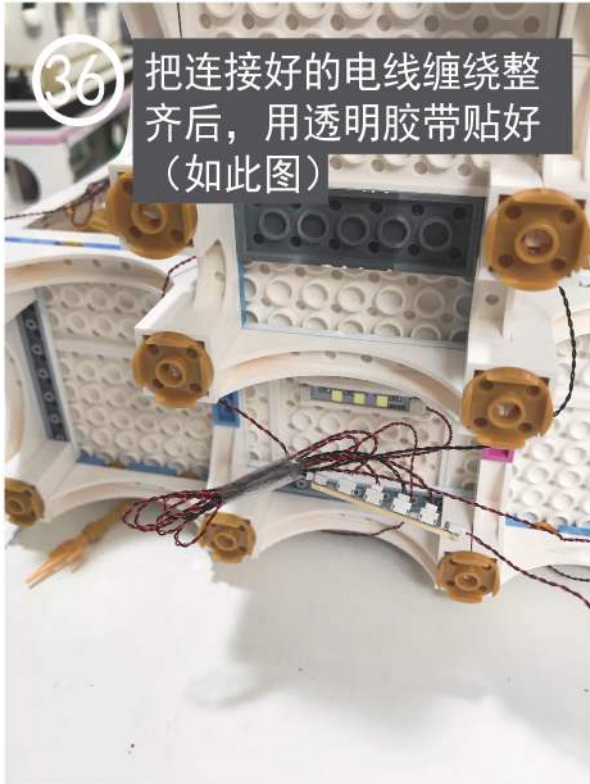






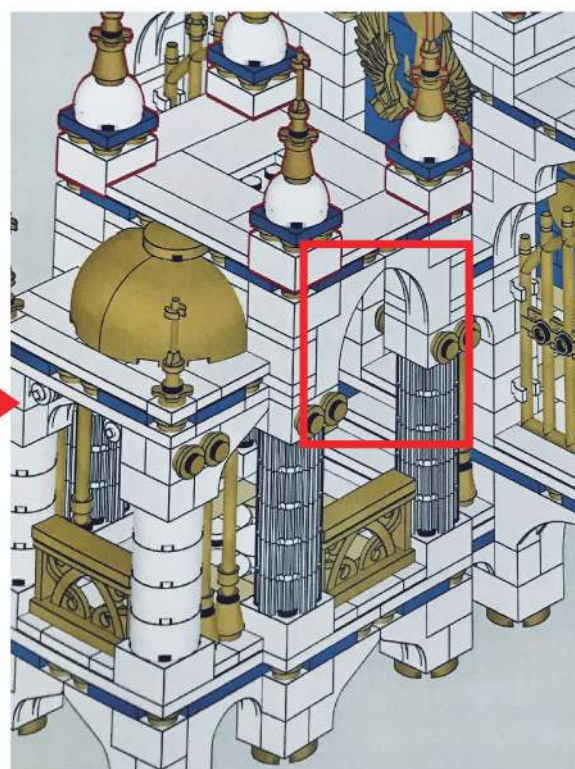
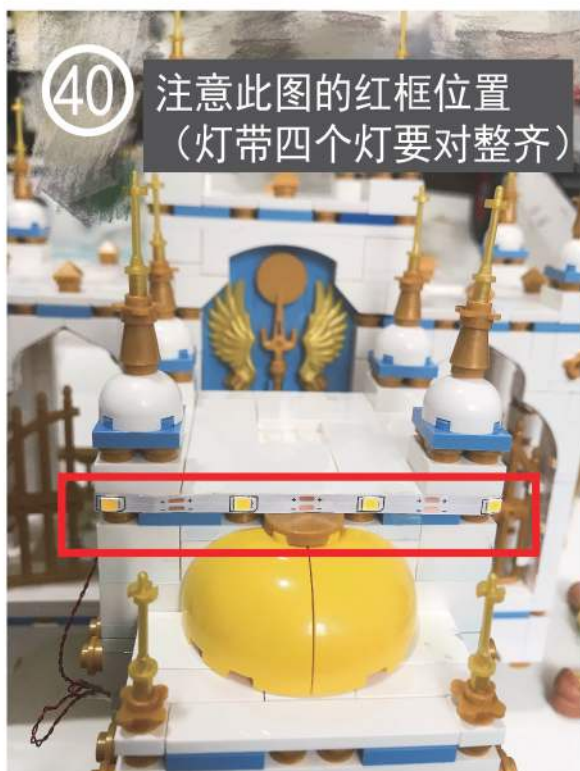






装配到积木拼装说明书第365步配合安装







安装完成