

86601  
黄金射手座星矢



拼奇积木



圣斗士星矢

©Masami Kurumada



为收藏而生



## 正版原创

敢于推翻每一版设计，  
乐于雕琢每一个细节，  
追寻专属于收藏级积木的  
点滴创新和尺寸呈现。

## 题材共鸣

耳熟能详的经典形象，  
似曾相识的童年记忆，  
用积木讲述专属于成年人的  
共同叙事和情感连结。



# 圣斗士星矢



## 永恒的经典

以希腊神话为背景，融合星座、圣衣、小宇宙等设定，热血漫画《圣斗士星矢》诞生不久便迅速风靡世界，被评为“20世纪日本不容错过的15部经典名作”之一。

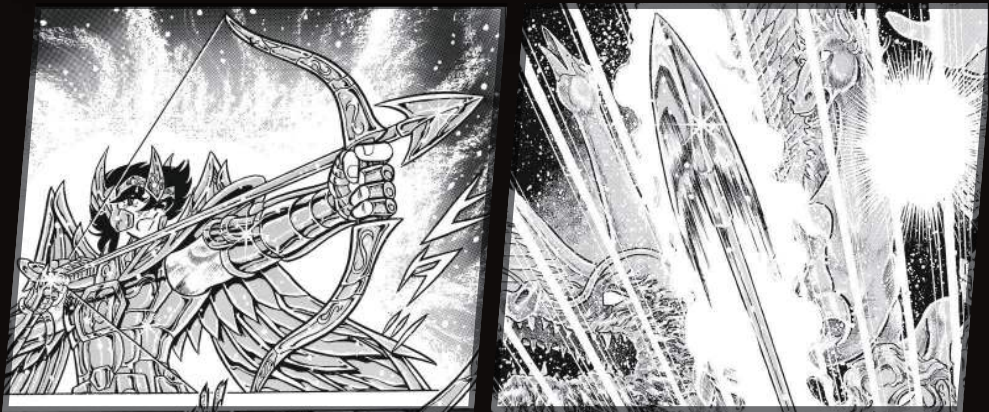
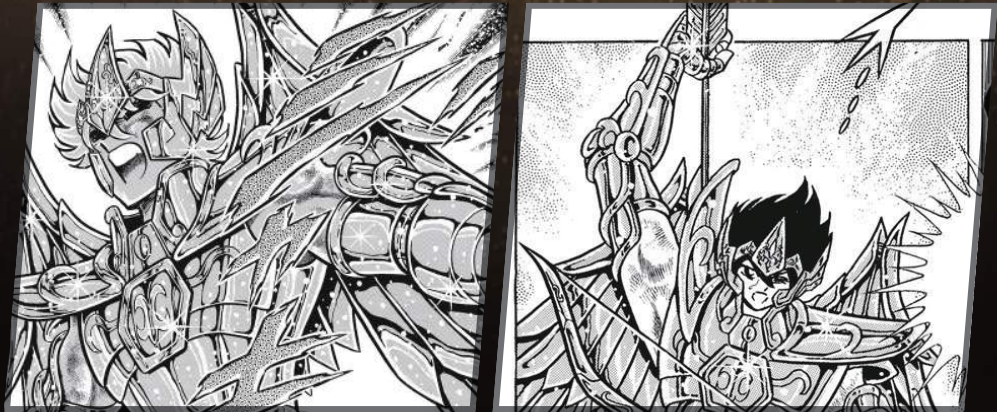
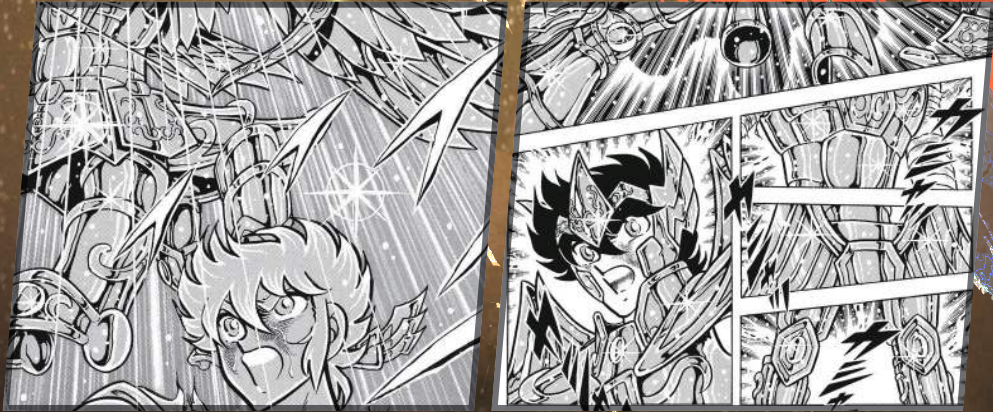
1989年，在那个互联网还未普及的年代，作为国内引进的首批海外漫画作品，《圣斗士星矢》承载了几代人青春回忆，拳可击破天空、脚可踢裂大地的圣斗士形象也成为了大家心中永恒的经典。



# 黄金之箭与儿时信仰

时光如白驹过隙，角落里泛黄的漫画书边缘微微上翘，我们也早已淡忘那些不切实际的幼稚幻想。

可当海皇大敌当前，岌岌可危的星矢终于披上圣衣拉开弓弦——那支划破苍穹的黄金之箭，却寄托着儿时最为天真纯粹的一抹信仰，仍在心底焕发着希望的光芒。



「当世界遍布邪恶的时候，一定会出现希望的圣斗士来保护雅典娜女神，守护大地的爱与和平。」



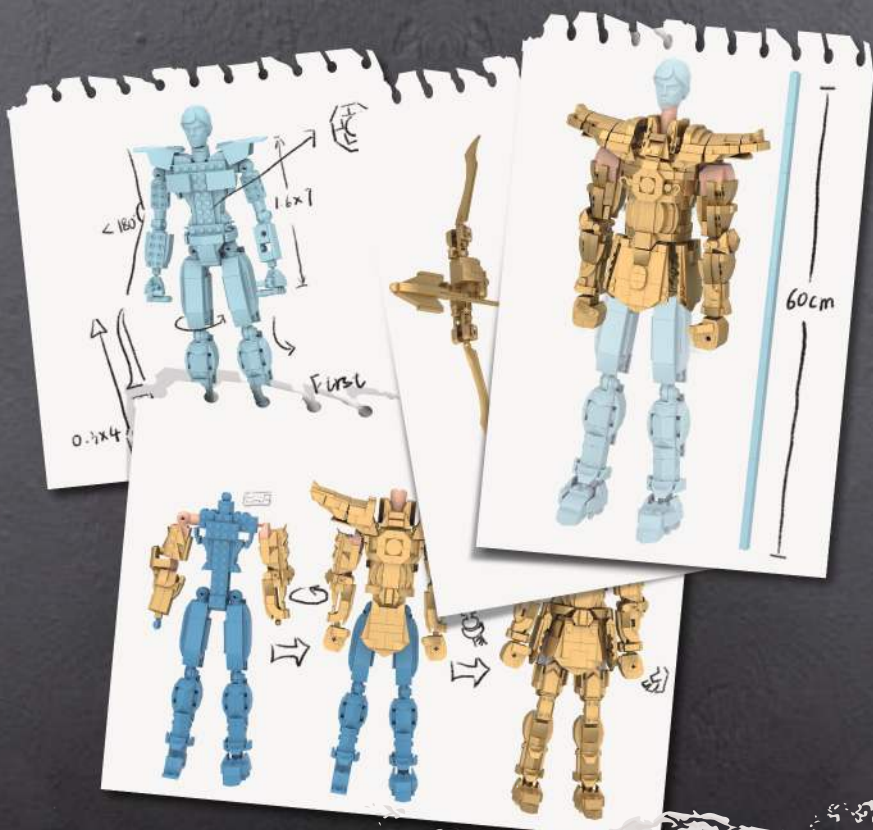
# 注视着手中的《圣斗士星矢》 漫画手稿, 我们浮想联翩。

这是《圣斗士星矢》首次在国内与积木品牌达成合作,  
而身着射手座黄金圣衣的星矢,  
又是《圣斗士星矢》中极具代表性的经典形象,  
如何恰到好处地呈现星矢的形象和姿态,  
将会是我们所面临的最大挑战。

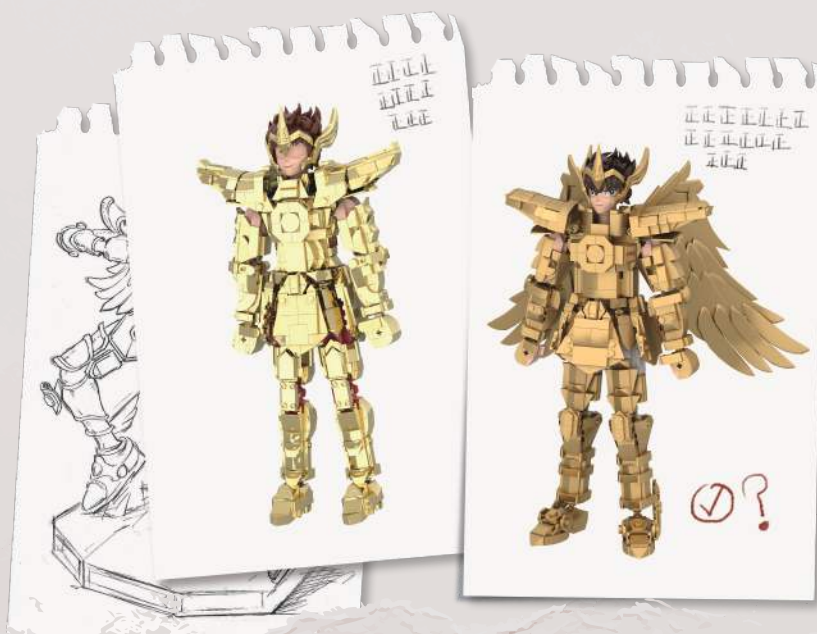
“成人向”和“收藏级”  
的好产品,  
是我们一直在探索的课题。

2021年, 我们进行了创新的产品尝试: 将半骨骼和机械风融合,  
用半机甲的设计语言诠释铁臂阿童木。  
阿童木半透视机甲走红所带来的设计风潮,  
给了我们更充足的信心和勇气,  
去思考如果不拘泥于常规的设计语言,  
突破积木产品边界的可能性。

但故事的进展总是波折……



在适合的尺寸限制中,刻画星矢的外观细节,并同时实现关节的可动和姿态的演绎,是摆在我们面前的第一个“不可能完成的任务”。甚至曾有60cm的“巨人”星矢出现在我们的设计图稿中,但过于不友好的产品尺寸也必然会让我们将这个设定推翻。



当我们百般尝试,似乎终于将任务攻克,基础积木零件却无法在外观细节上达到我们的预期。星矢比例修长的四肢、圣衣复杂的形状结构.....都是我们想要呈现的外观细节,更不用提盔甲表面精细的图案纹理和凹凸质感了。



而为了提升产品收藏质感而增加的展示地台,在大量零件的堆砌下,虽然能实现较为复杂的形状结构,却也极大地延长了拼搭时间,且同样无法提供足够令人满意的外观细节。

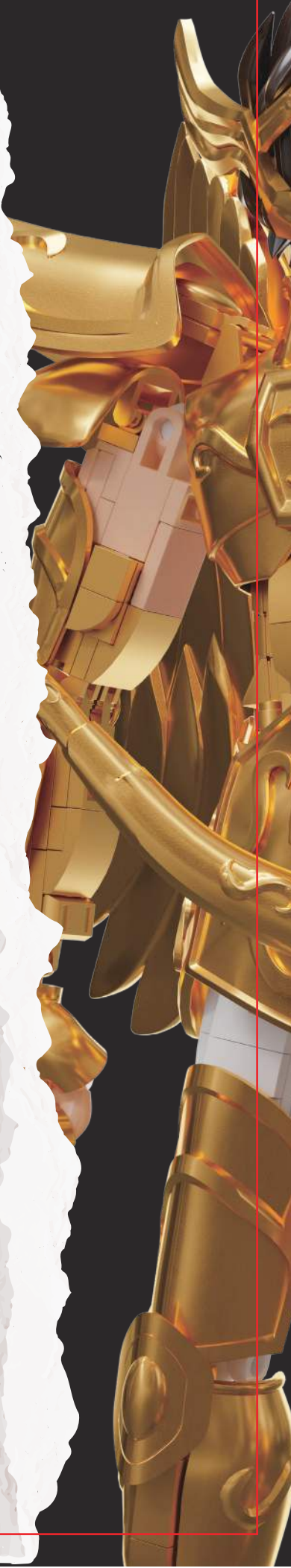
# 定制零件成为了我们破题的不二之选。

基于积木内构的定制零件应用,能够在极致刻画星矢外观细节的同时,保留积木产品所长:

通过球关节、科技件实现四肢的可动性,让星矢能够呈现多种姿态



步骤简单,极易上手,在拼砌过程中提供“亲手创造”的产品互动体验





但决定使用定制零件仅仅是一个开始

.....

定制零件,意味着我们要从无到有地进行创造,在考虑外观细节的同时,兼顾定制零件与积木内构的契合方式,进而评估整个拼搭体验是否友好,以及最终呈现的产品形态能否令人满意。定制零件,也意味着大量的模具和复杂的工序,为此我们必将承担巨大的研发成本,经历漫长的研发周期。

这种非常规的产品形态能否被认可,这样的研发投入我们又能否支撑?我们动摇过。

可如果因为畏惧,我们不去将探索进行到底,不去执着于自己心目中的好产品,我们又谈何突破积木产品边界呢?我们不想浅尝辄止。



T1.0708. 模具精修



T3.0703. 颜色测试

幸运的是,当我们第一次亲手将定制零件的样品“咔哒”一声与积木内构拼砌起来,那种奇妙的感觉直到此刻仍值得回味,而后一遍遍调试零件咬合力度,一次次勾兑零件表面喷色,对于当时的我们亦是乐事。

不知又不觉,一晃便一年。45种形态各异的定制零件经过日往月来的打磨,它们每处凸起的厚度,每个转角的幅度,每种不同色温下的光泽,我们都已烂熟于心。它们也总算服帖,入微的外观细节、灵活的动作姿态、顺畅的拼砌体验,都终于达成预期。我们郑重地导出了设计定稿。

这是在「黄金射手座星矢」来到大家手中之前,方才发生的故事。

希望大家在畅快拼砌的过程中,能够从片砖片瓦的金色光泽里,找回曾经闪耀着的天真与纯粹,而身着黄金圣衣的星矢,也能陪伴大家穿越光阴,时刻提醒:希望永存。

愿我们**突破积木产品边界**的尝试幸不辱命。

拼奇团队敬上



头盔



肩甲



胸甲



臂甲



裙甲



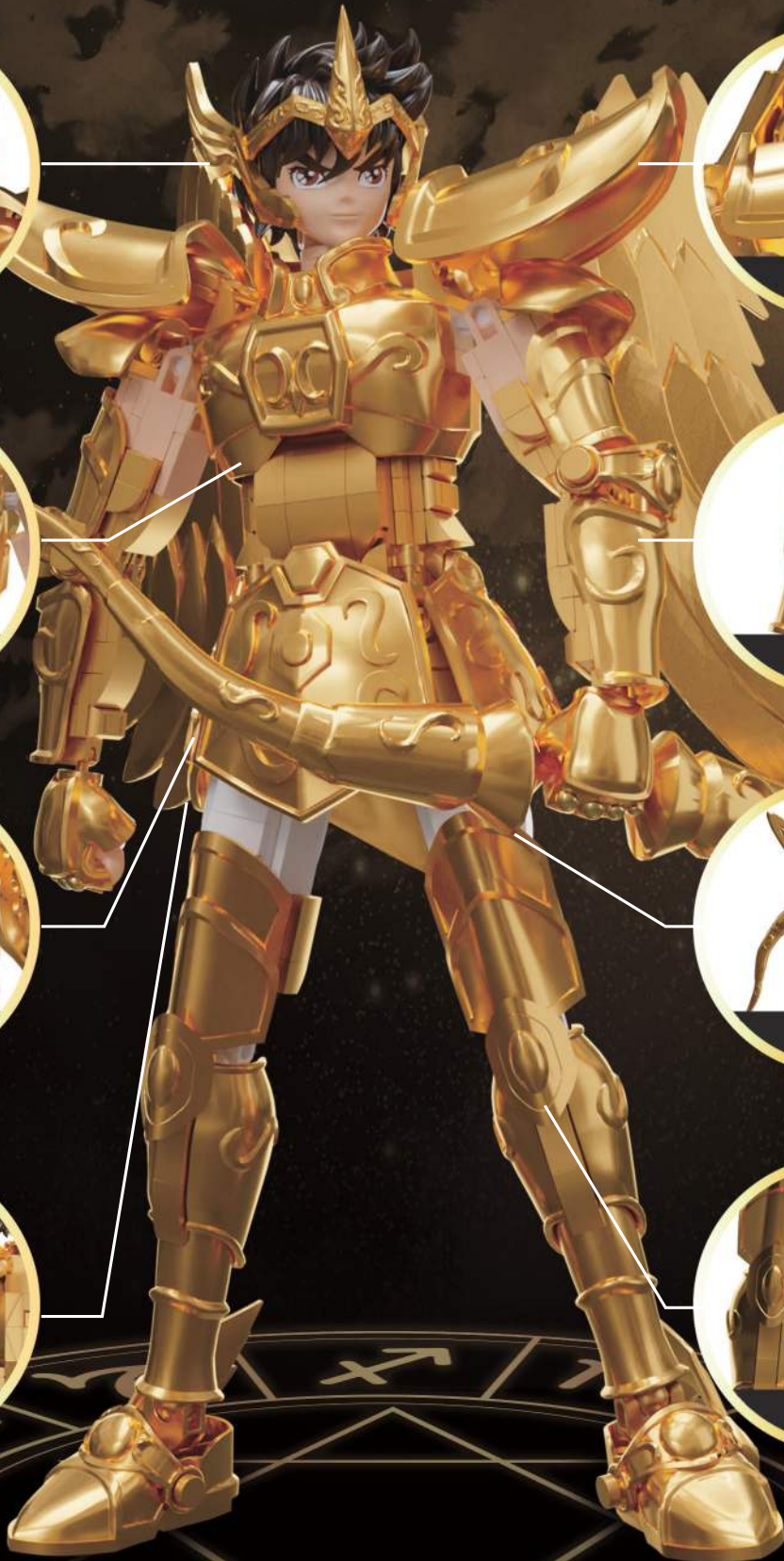
弓箭



翅膀



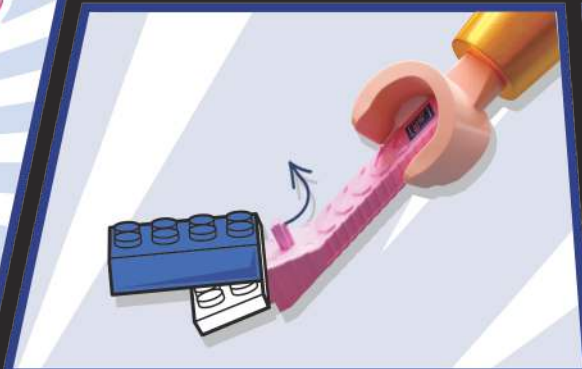
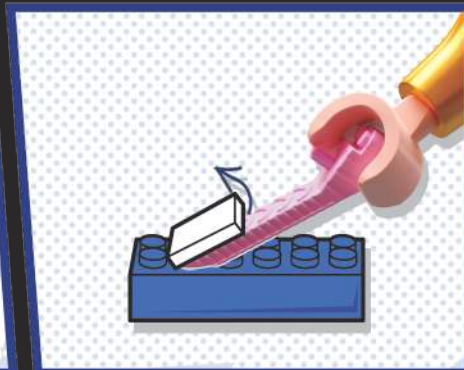
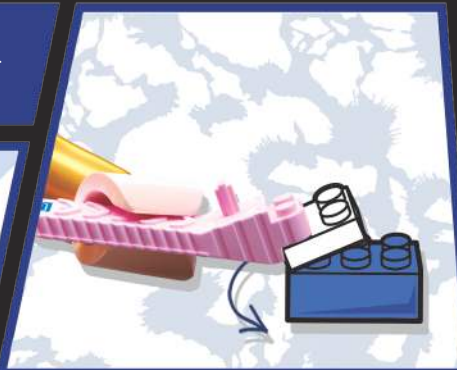
腿甲



# 这么拼更快哦!

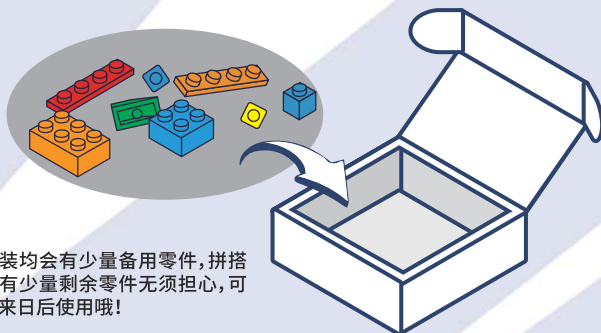


## 起件器使用方法



·别着急,大多数的“缺件”情况都只是零件暂时走丢了,再仔细找找看吧!

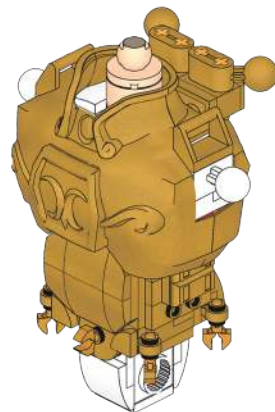
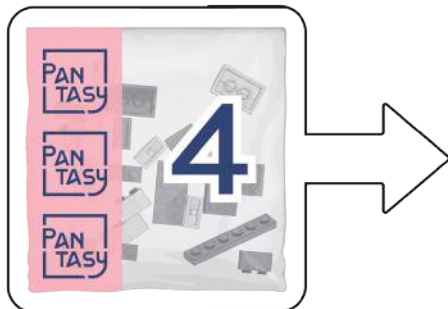
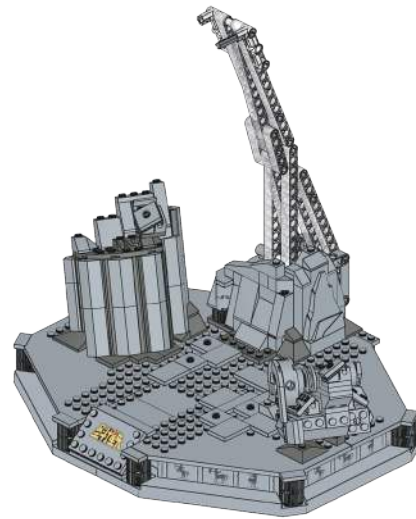
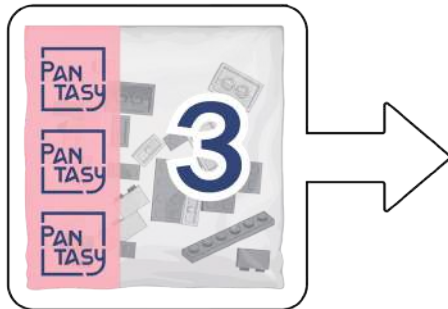
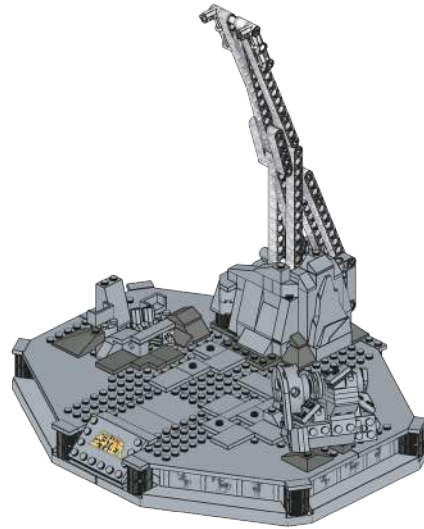
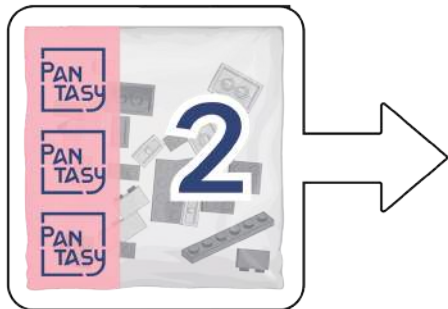
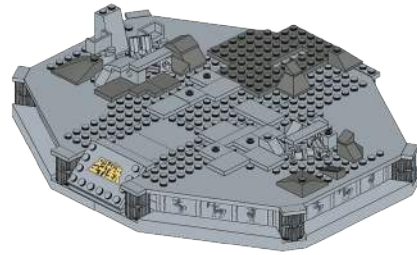
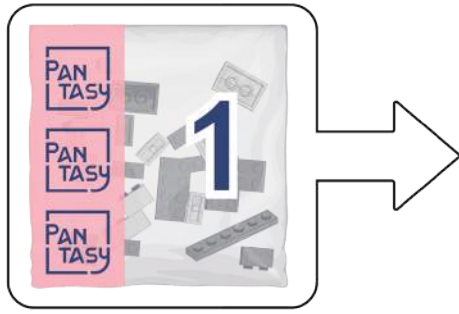
·也可以扫码关注拼奇官方公众号,点击【官方补件】进行申请,即可享受官方极速补件服务

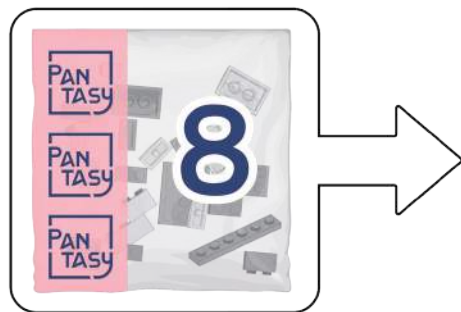
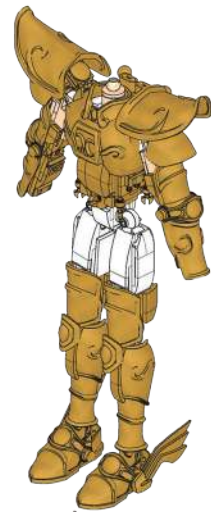
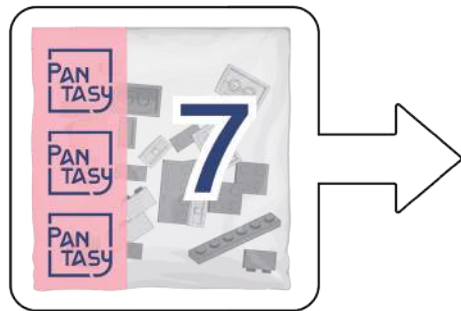
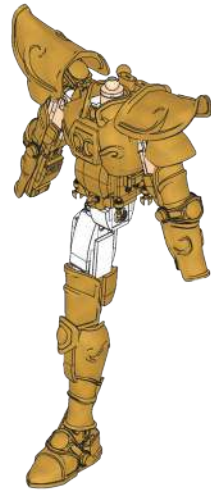
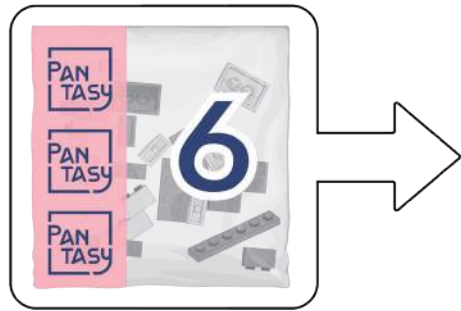
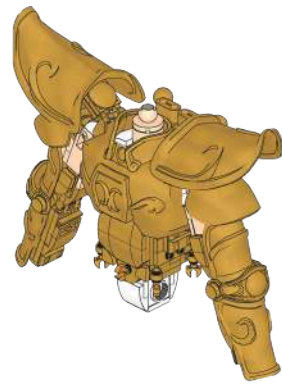
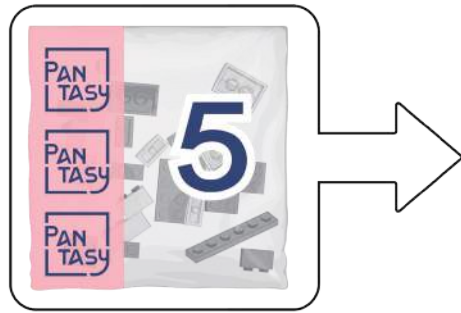


每个套装都会有少量备用零件,拼搭完成后有少量剩余零件无须担心,可储存起来日后使用哦!

### 找不到零件了?

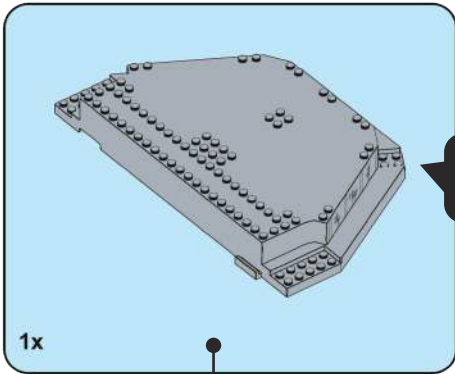
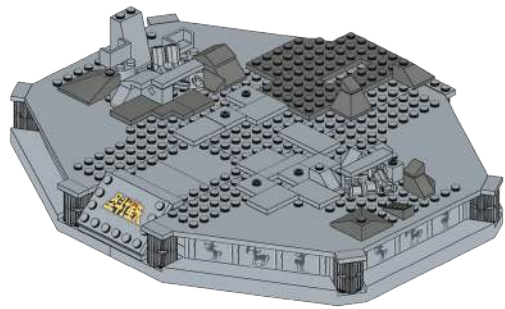
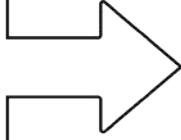
### 拼搭后有零件剩余?



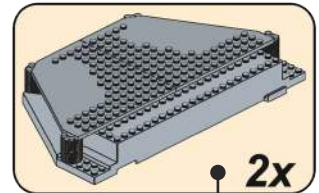




使用对应编号包  
内的零件才能拼  
出图中模块。



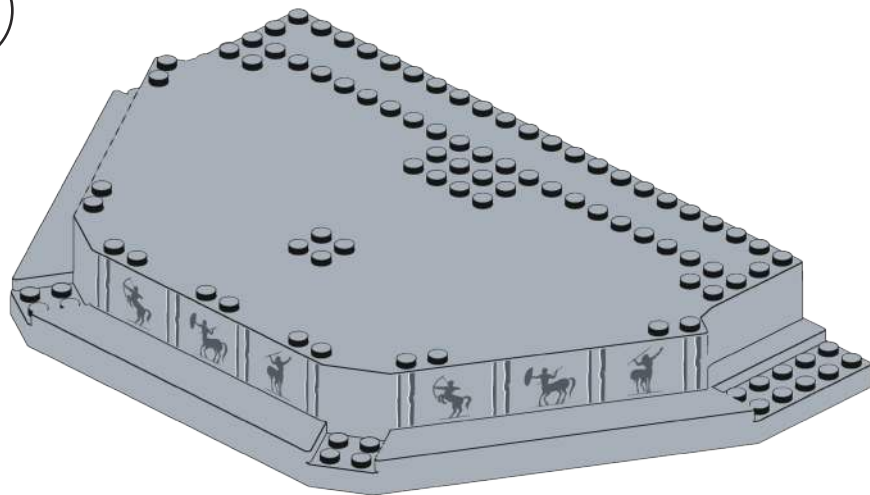
该零件在较  
小的内盒中。

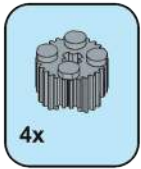


这是即将要拼  
搭的模块。

1

按零件表分拣零  
件拼搭更快捷。



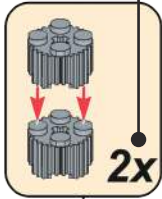


4x

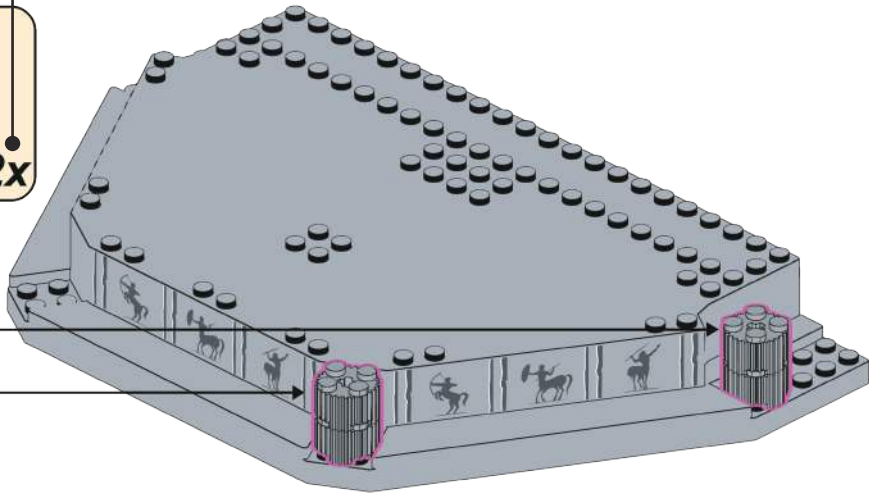
2



2x表示该模块  
需要拼2个。

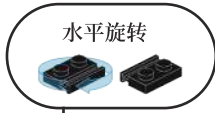


2x

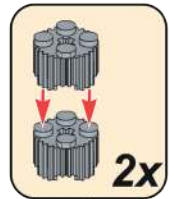


4x

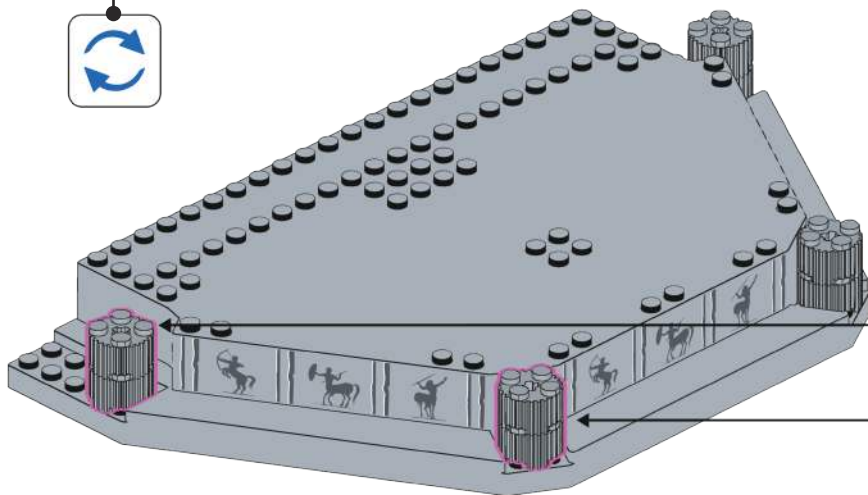
3

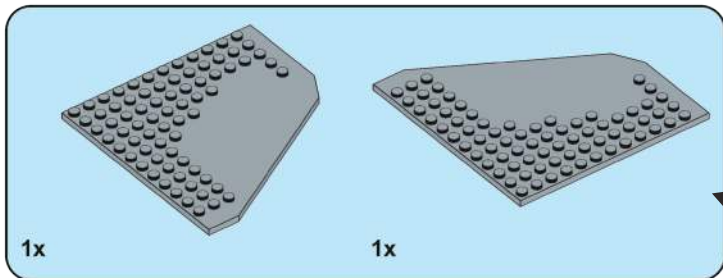


水平旋转



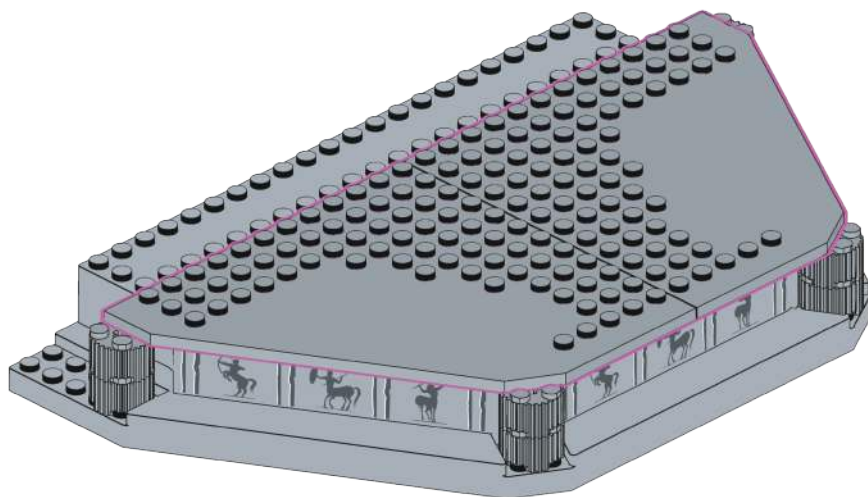
2x





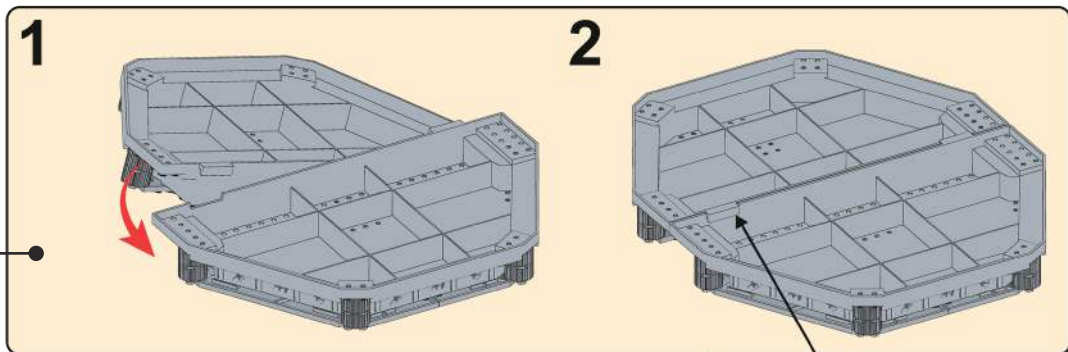
该零件在较小的内盒中。

4

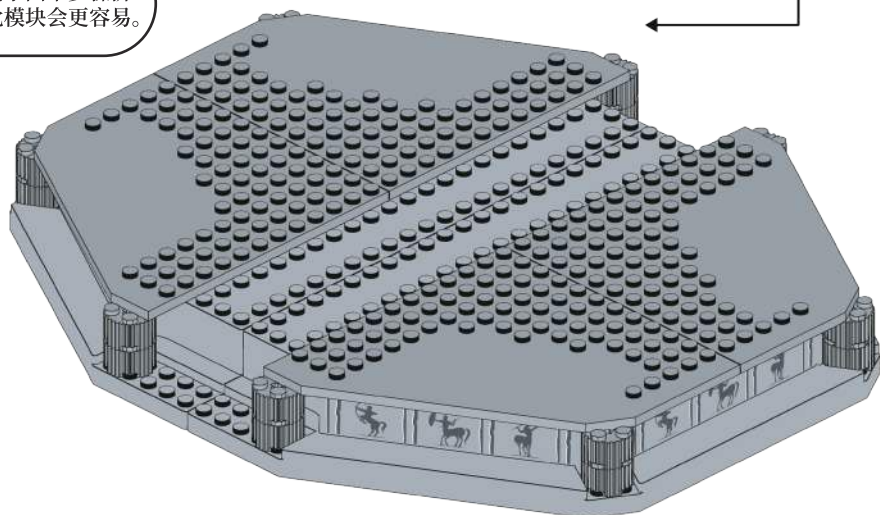
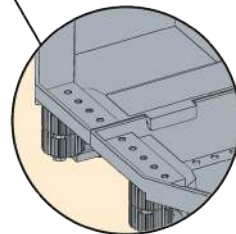


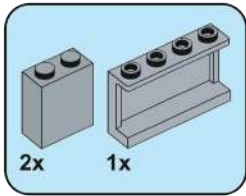
2x

5

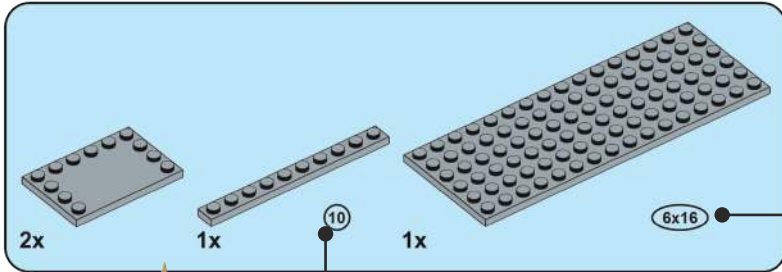
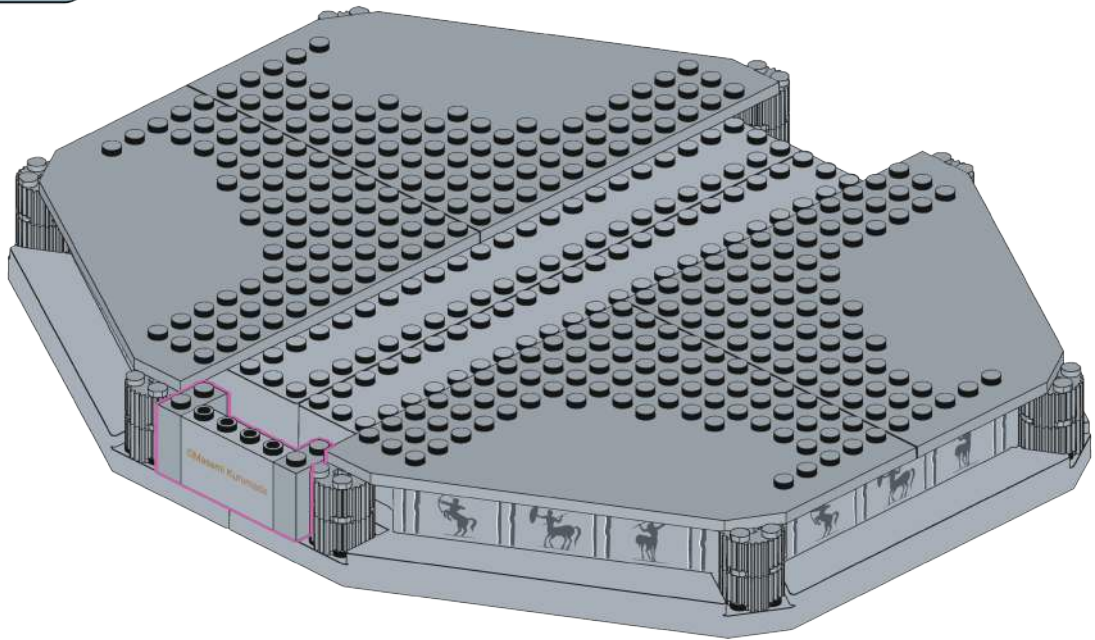


根据小图中步骤拼装此模块会更容易。





6

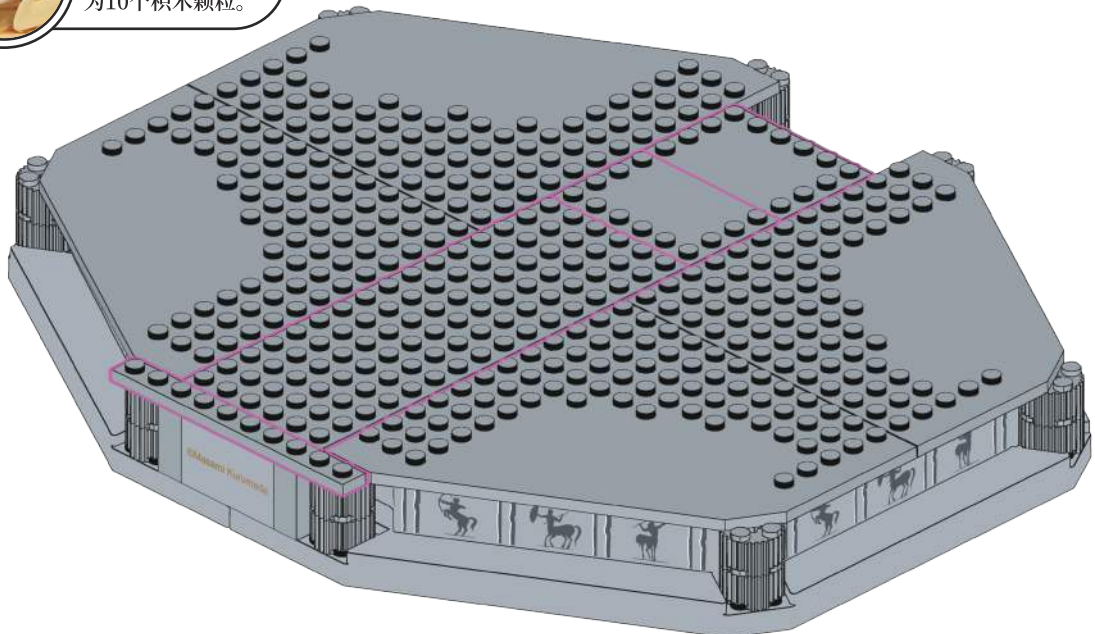


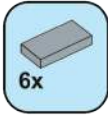
这是零件尺寸标识, 6x16表示该零件宽度为6个积木颗粒, 长度为16个积木颗粒。

7

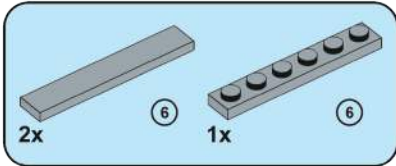
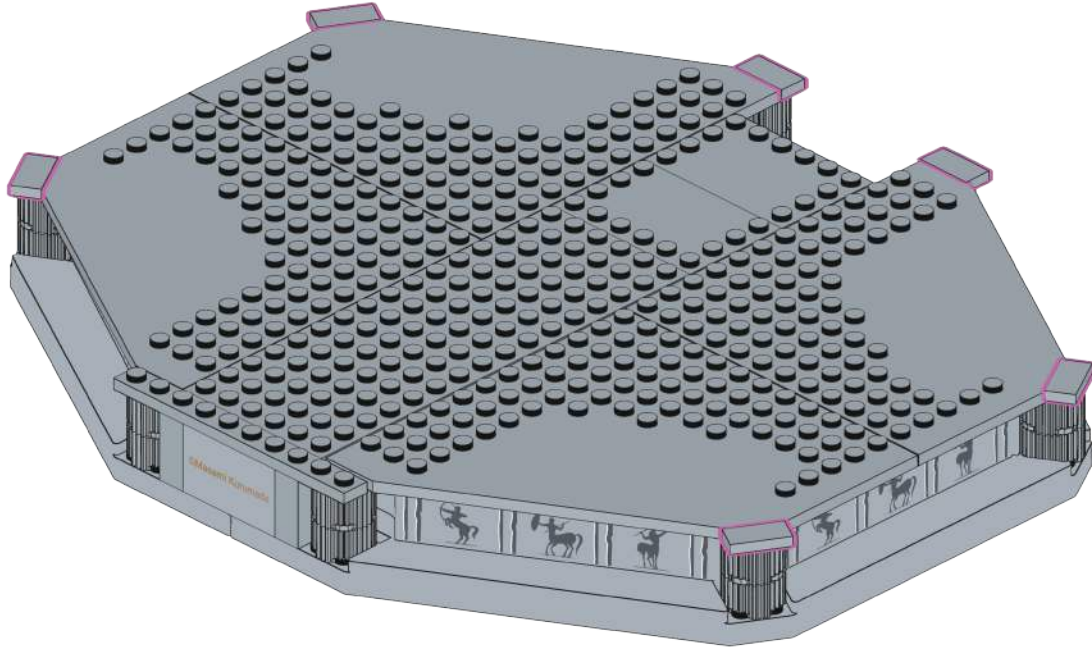


这是零件长度标识, 10代表该零件长度为10个积木颗粒。

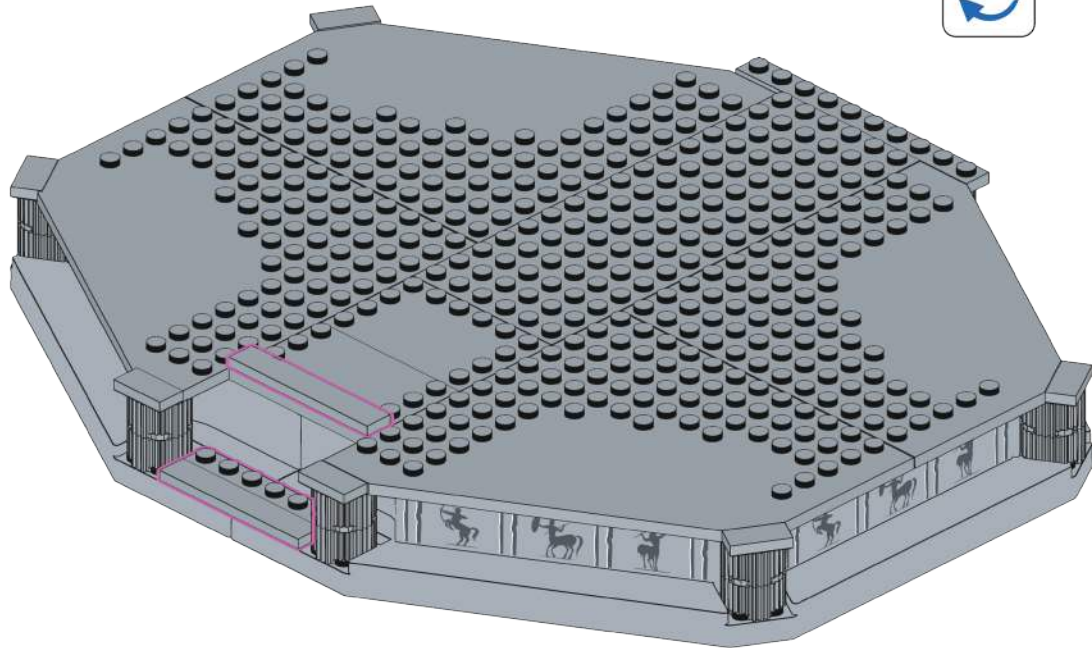


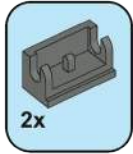


8

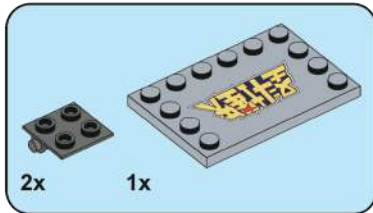
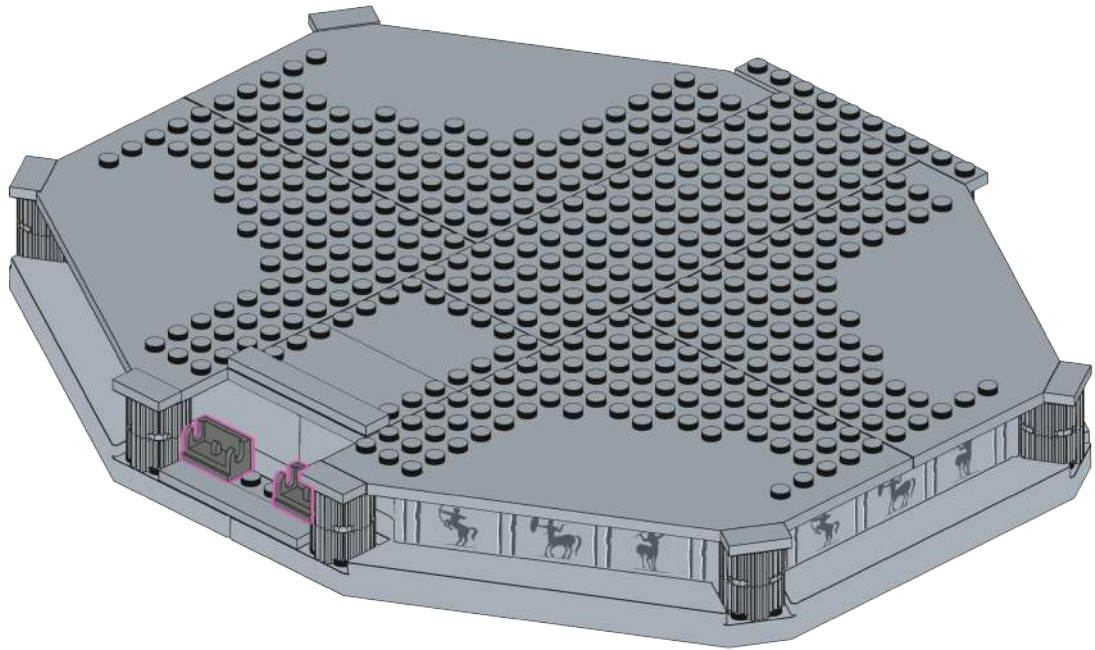


9

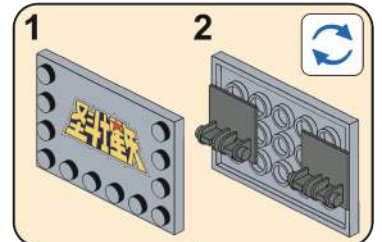
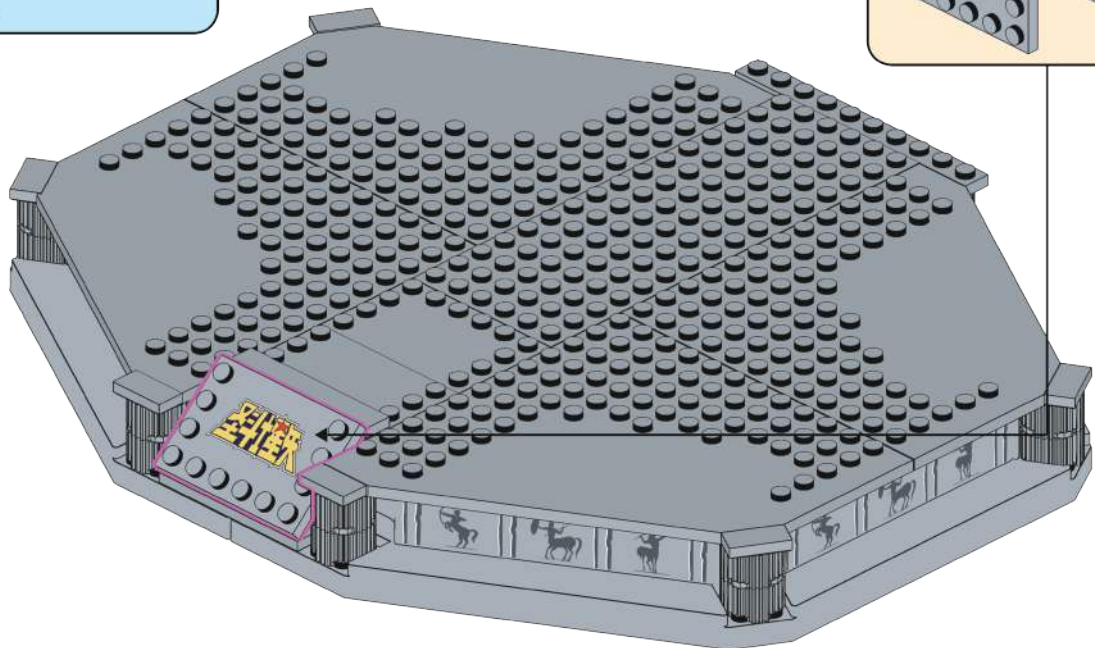


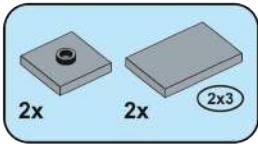


10



11

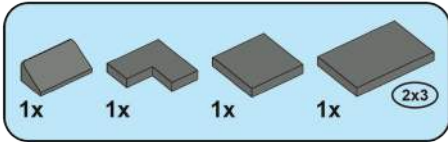
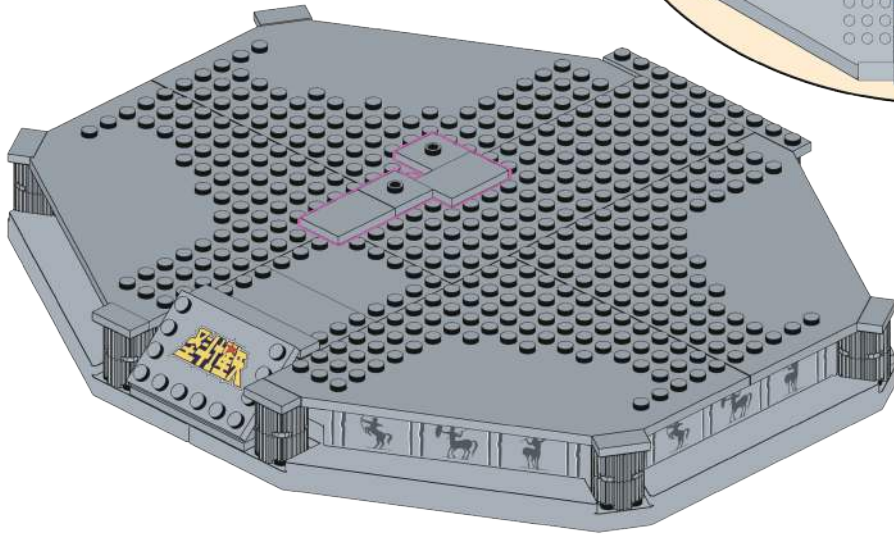
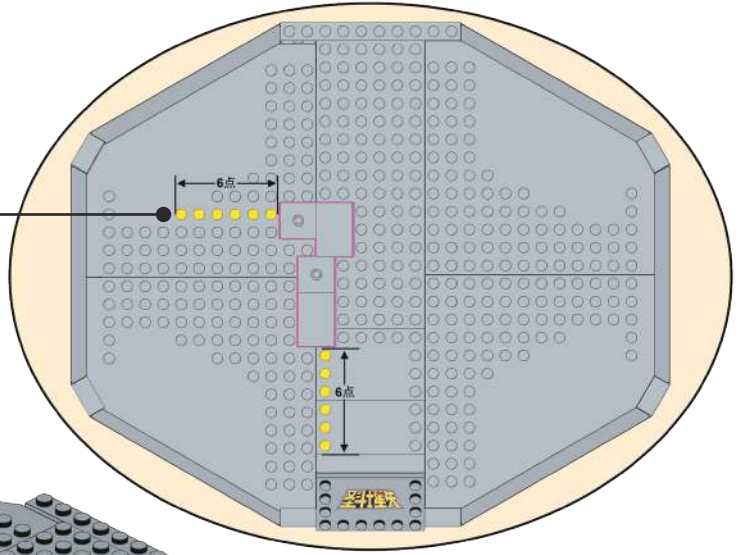




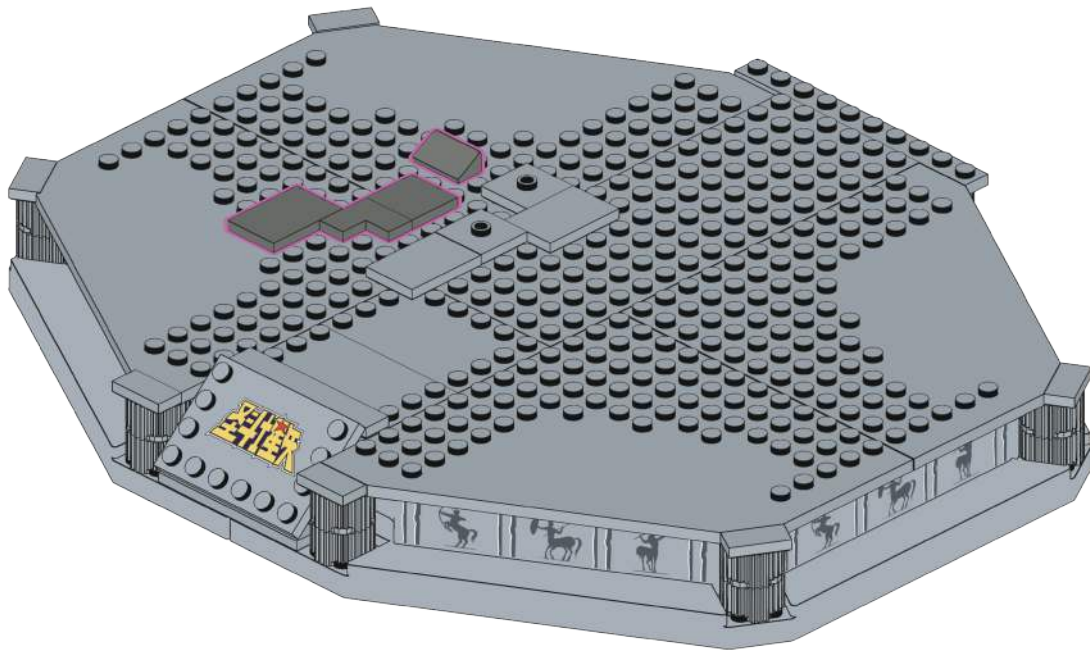
# 12

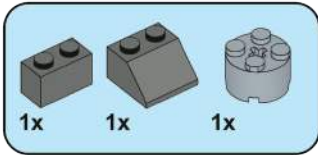


请注意该零件的拼搭位置, 小图中高亮点可用于参考拼搭位置噢。

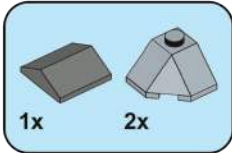
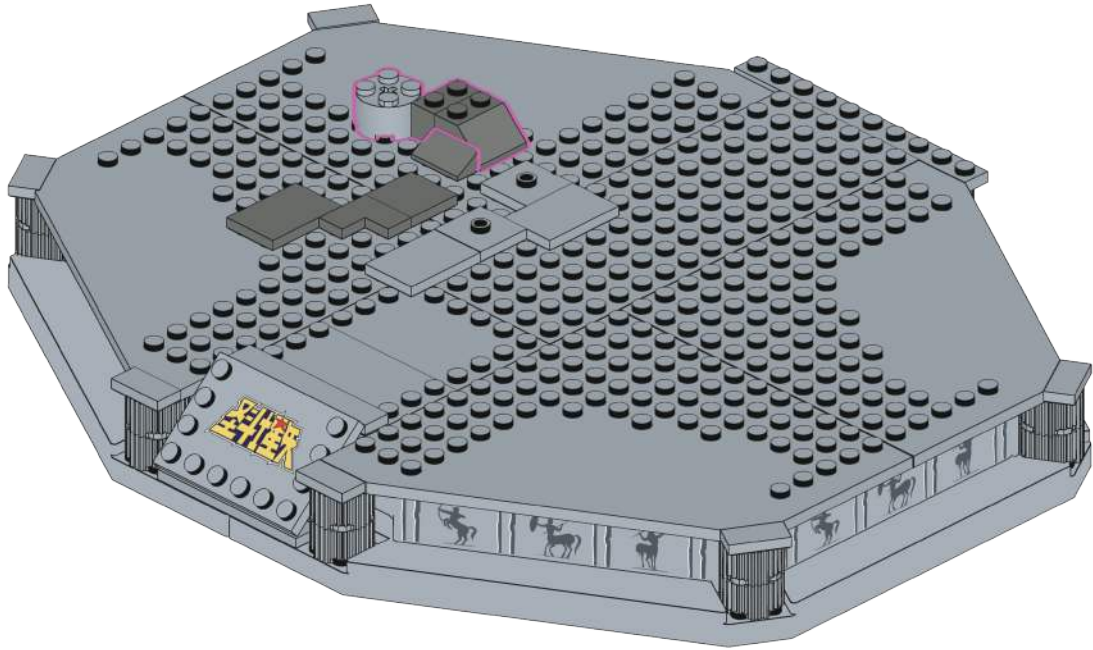


# 13

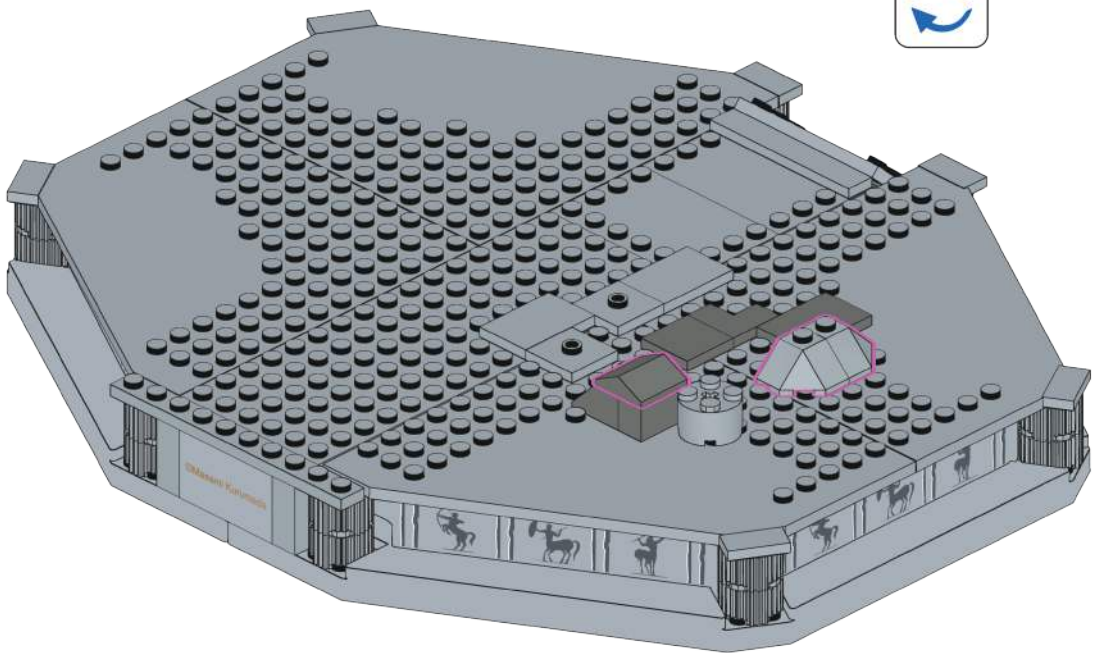


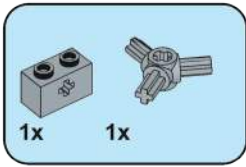


14

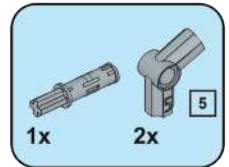
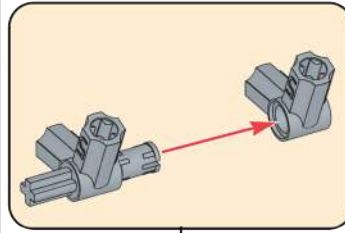
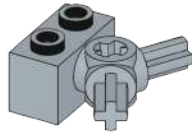


15

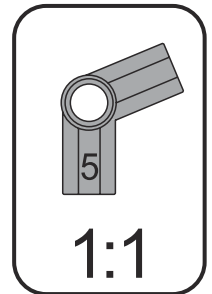
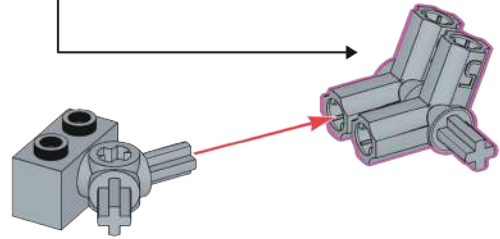




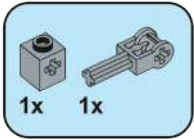
16



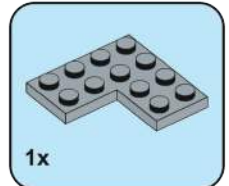
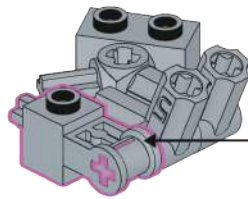
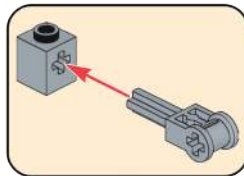
17



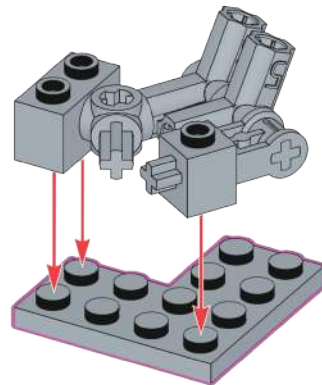
1:1

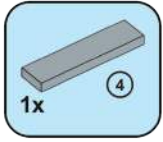


18

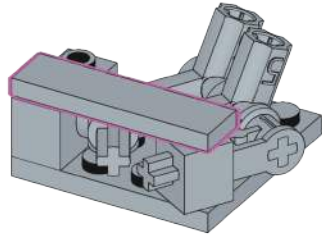


19



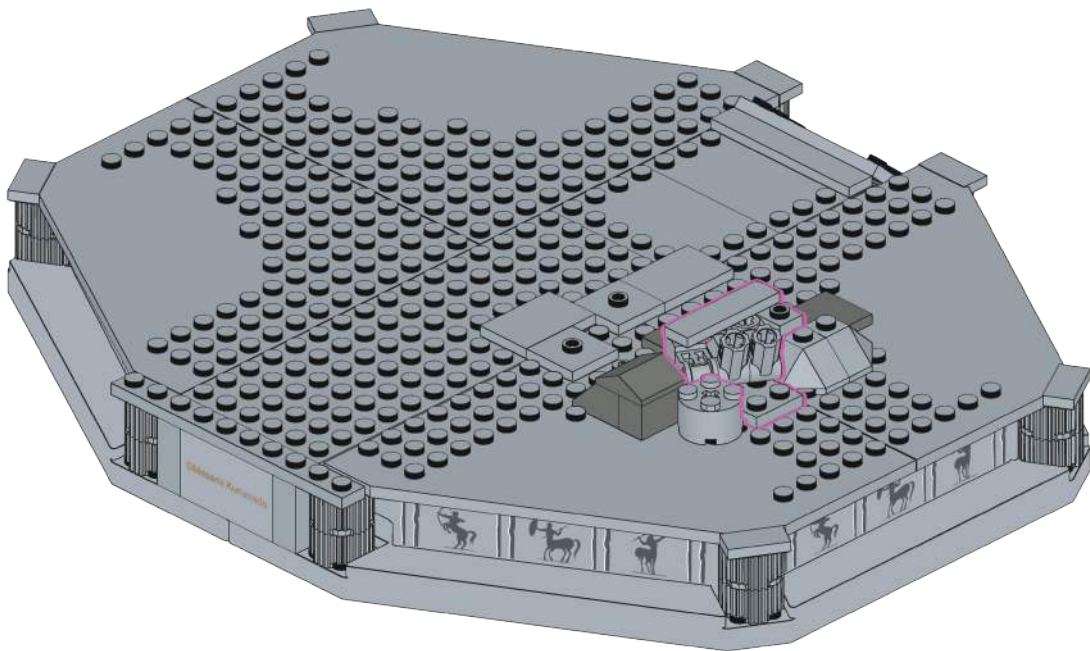


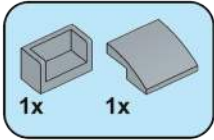
20



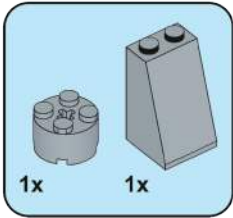
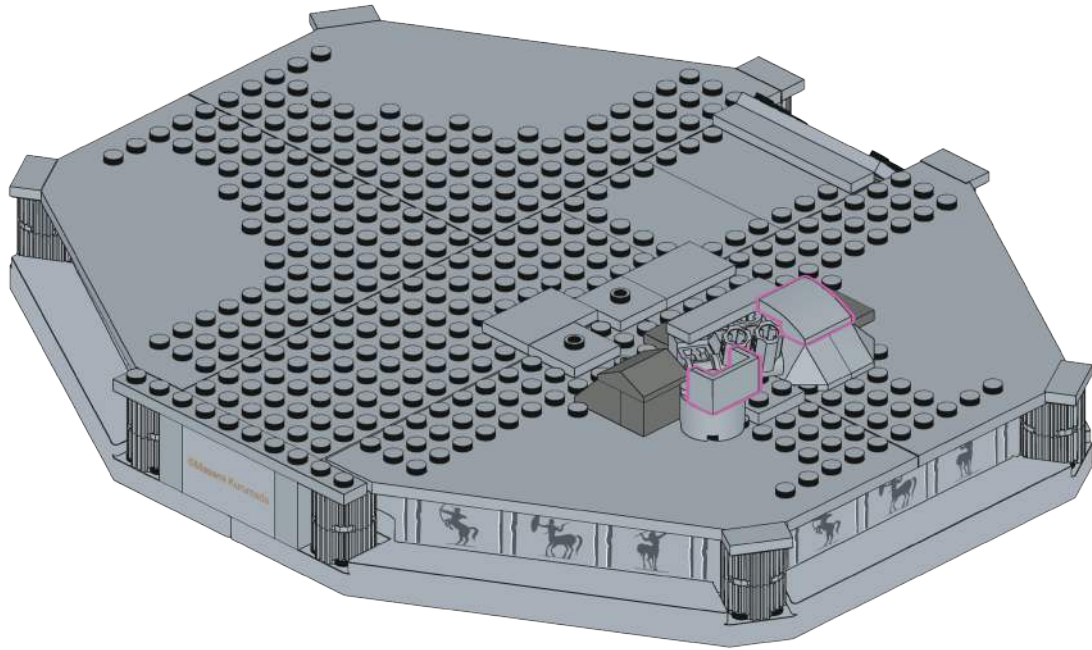
---

21

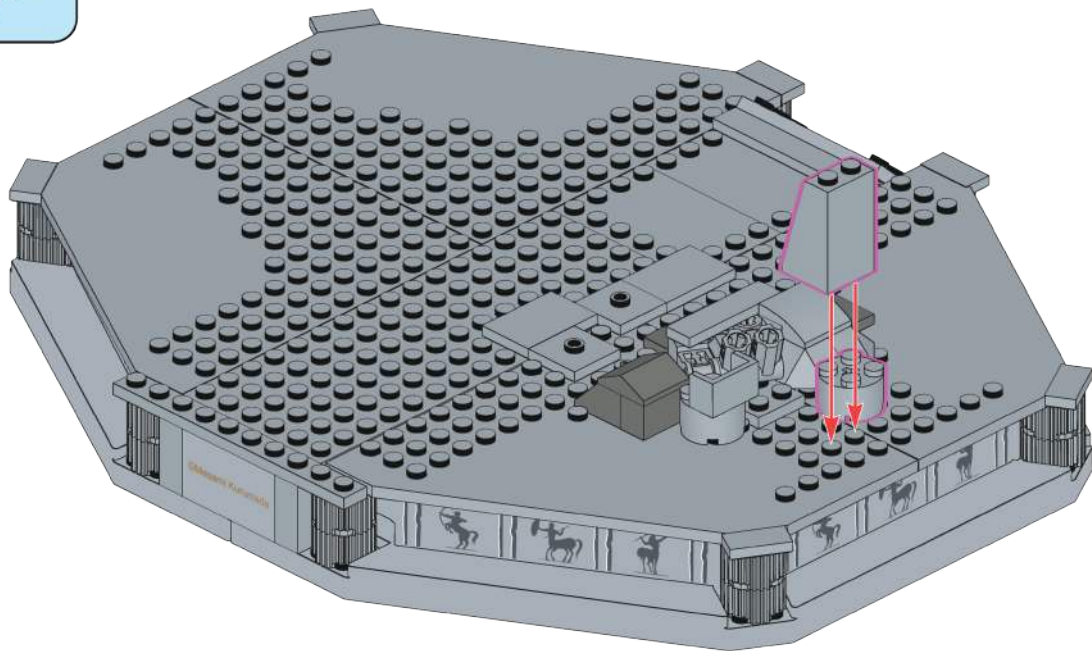


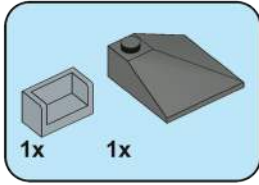


22

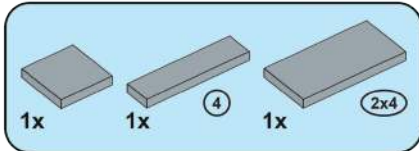
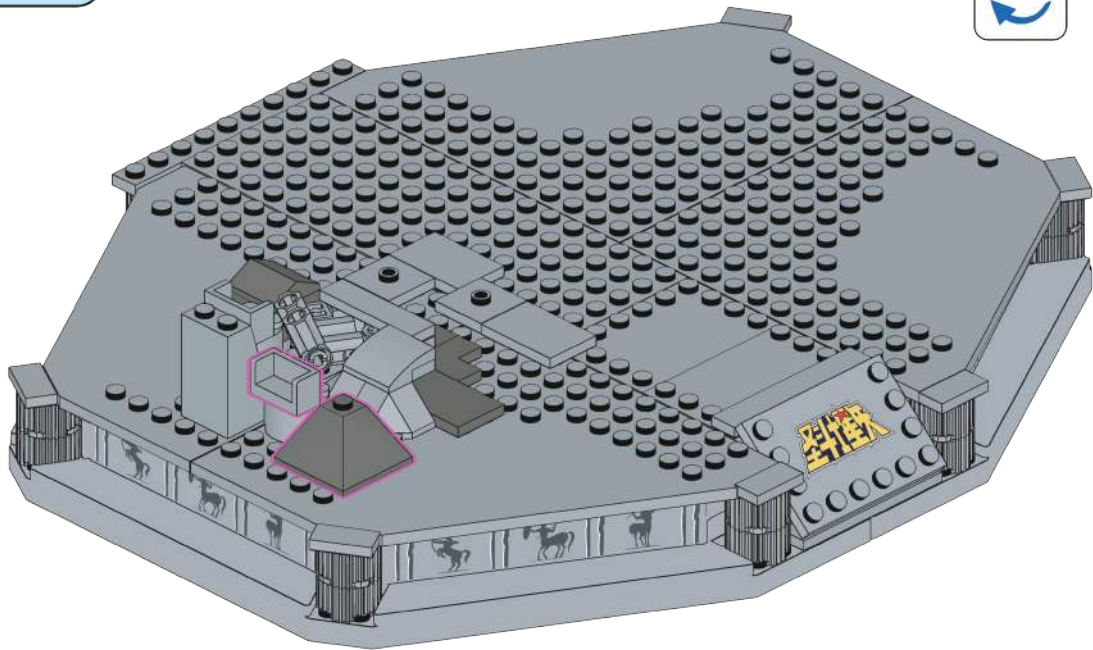


23

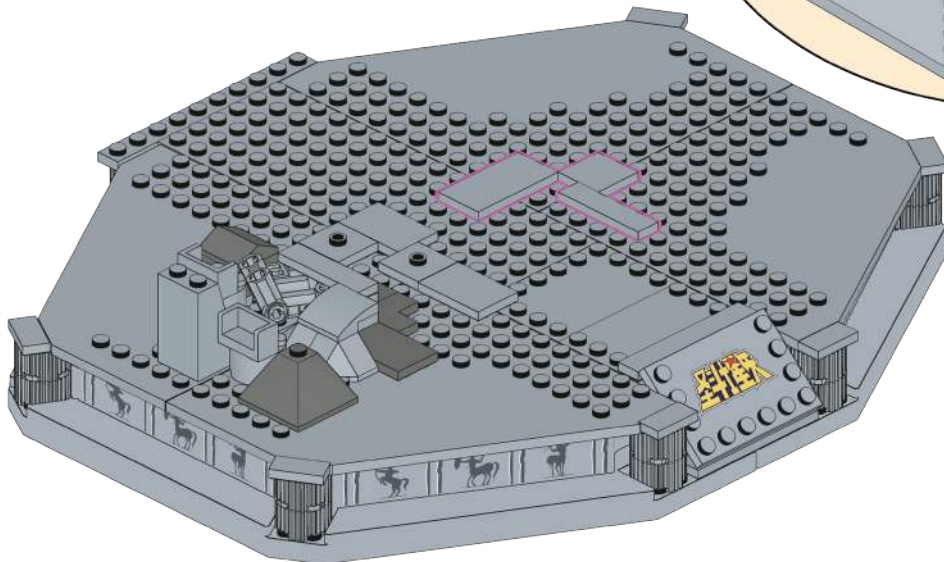
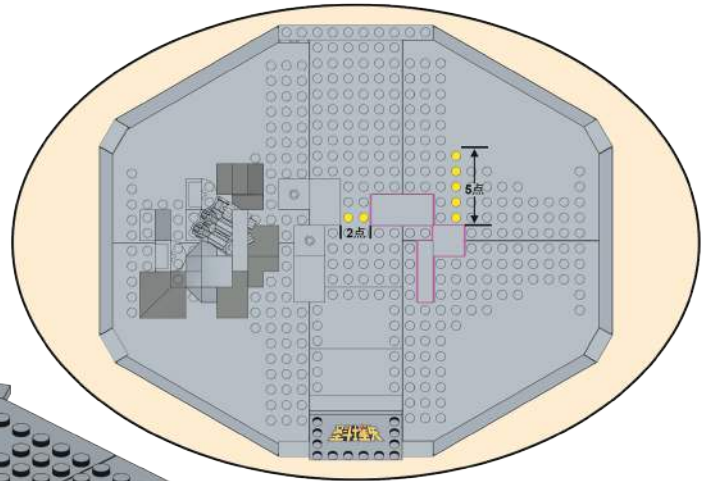


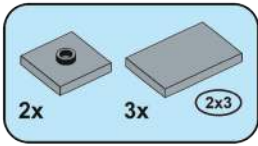


24

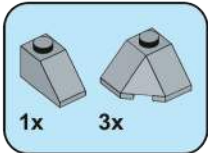
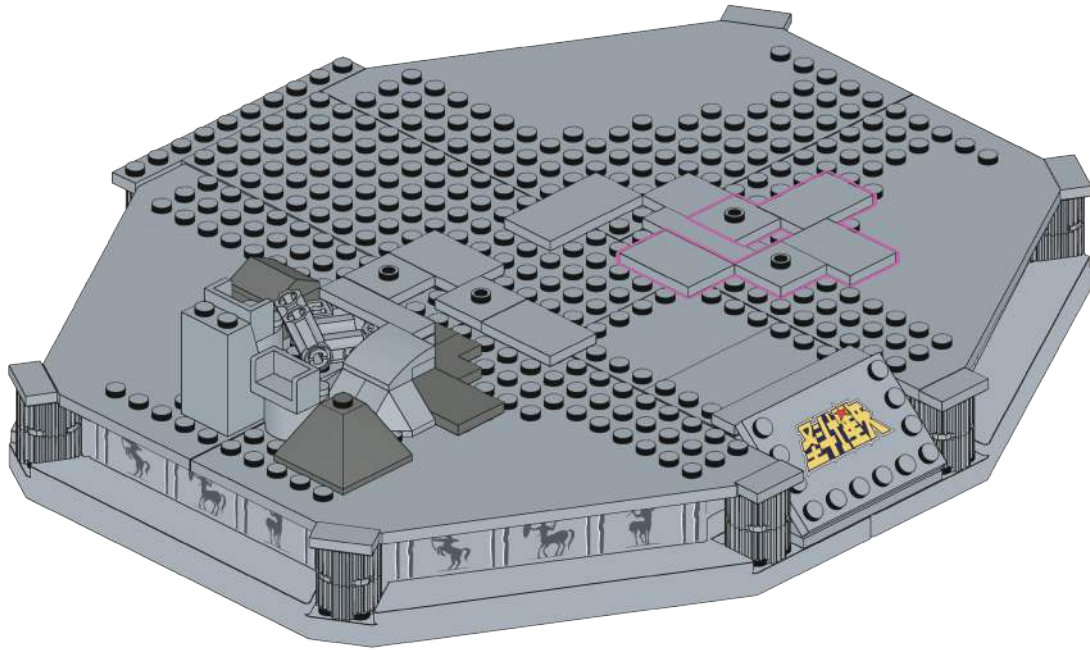


25

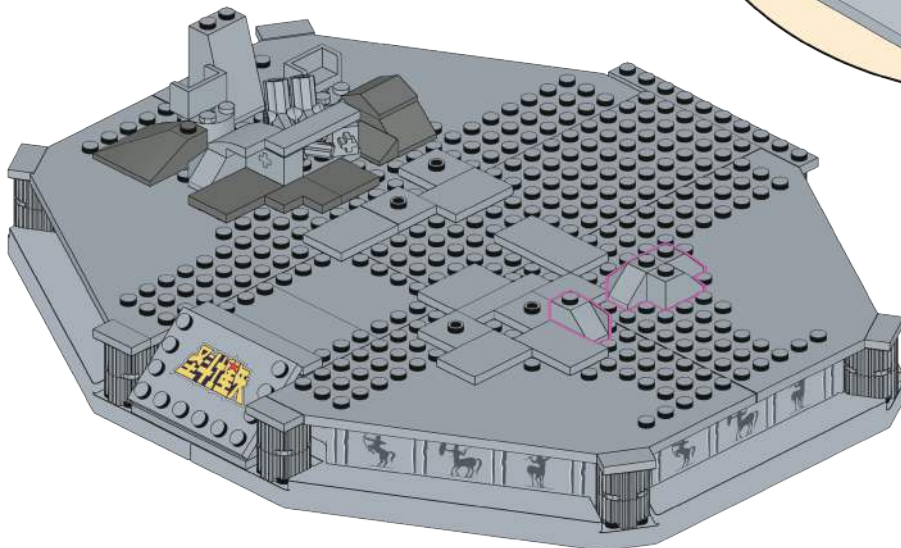
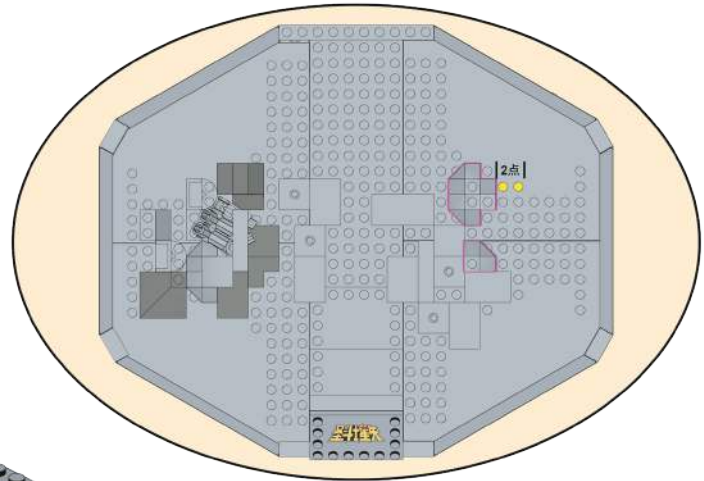


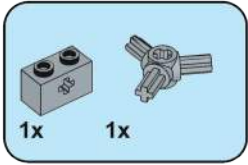


26

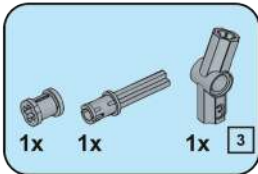
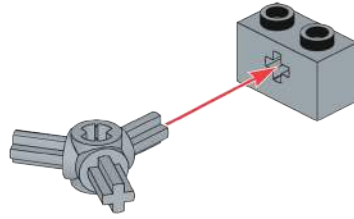


27

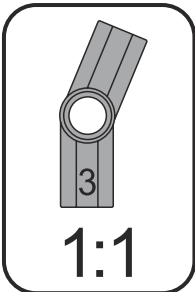
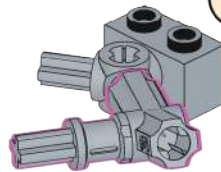
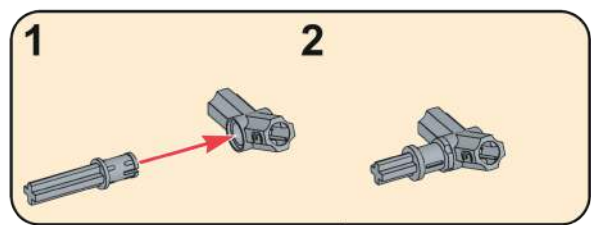




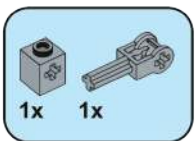
28



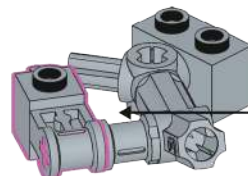
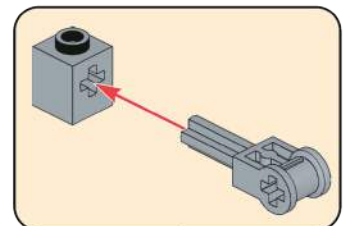
29



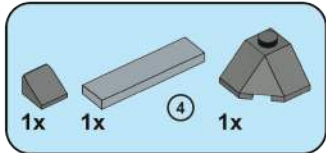
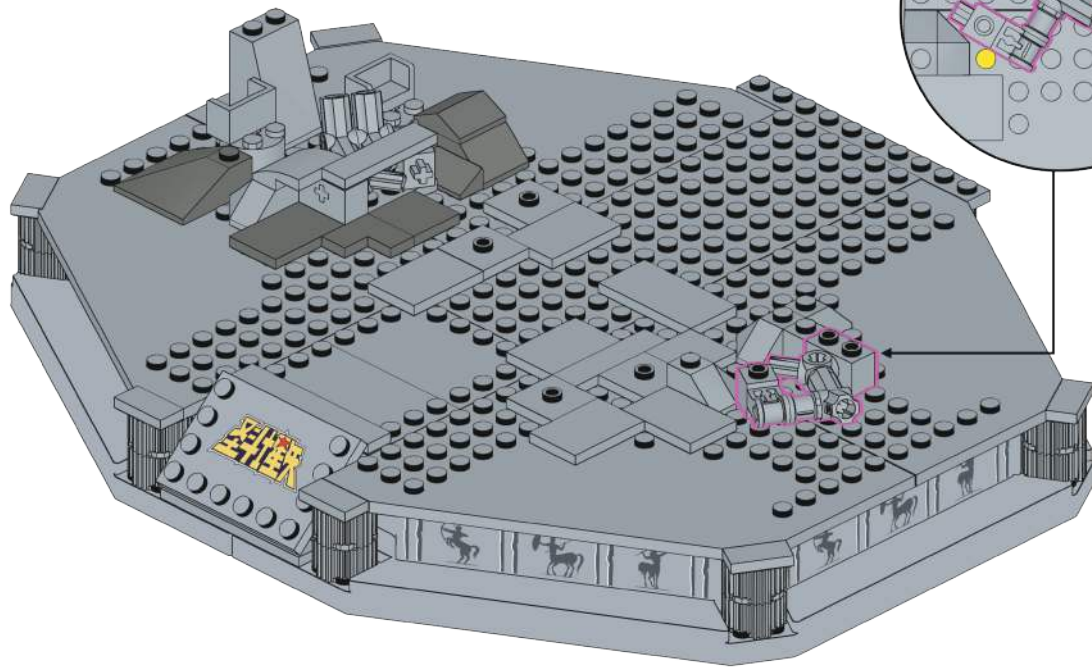
1:1



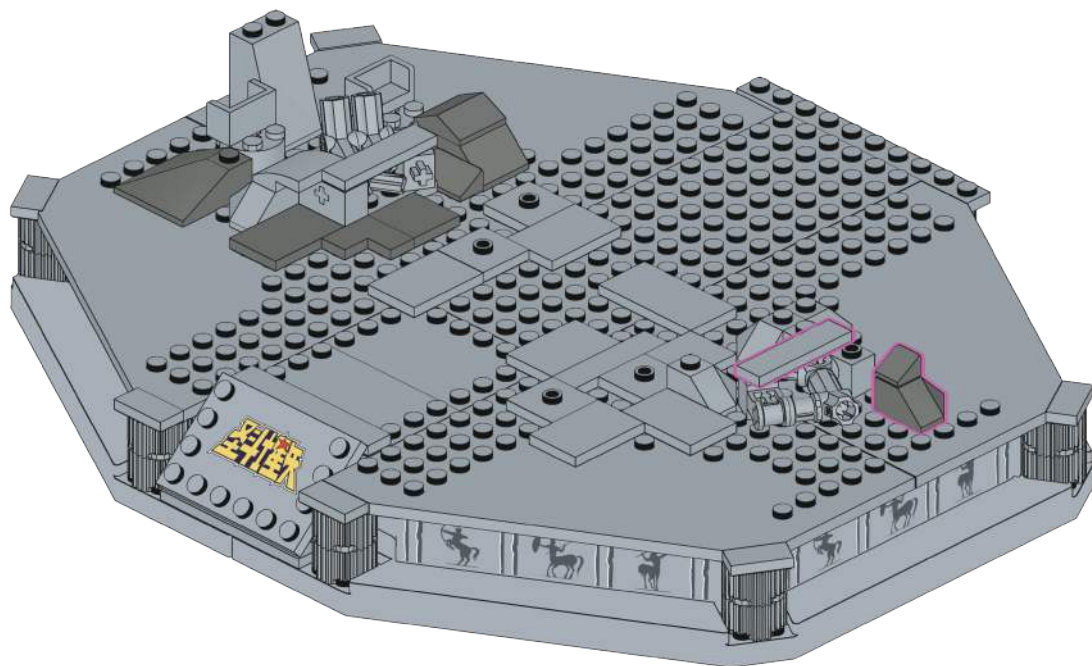
30

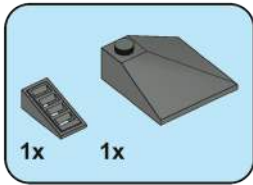


# 31

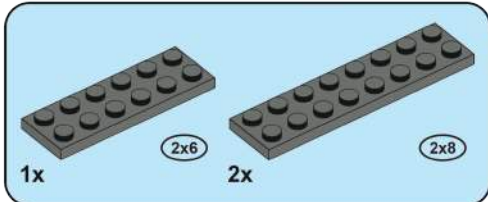
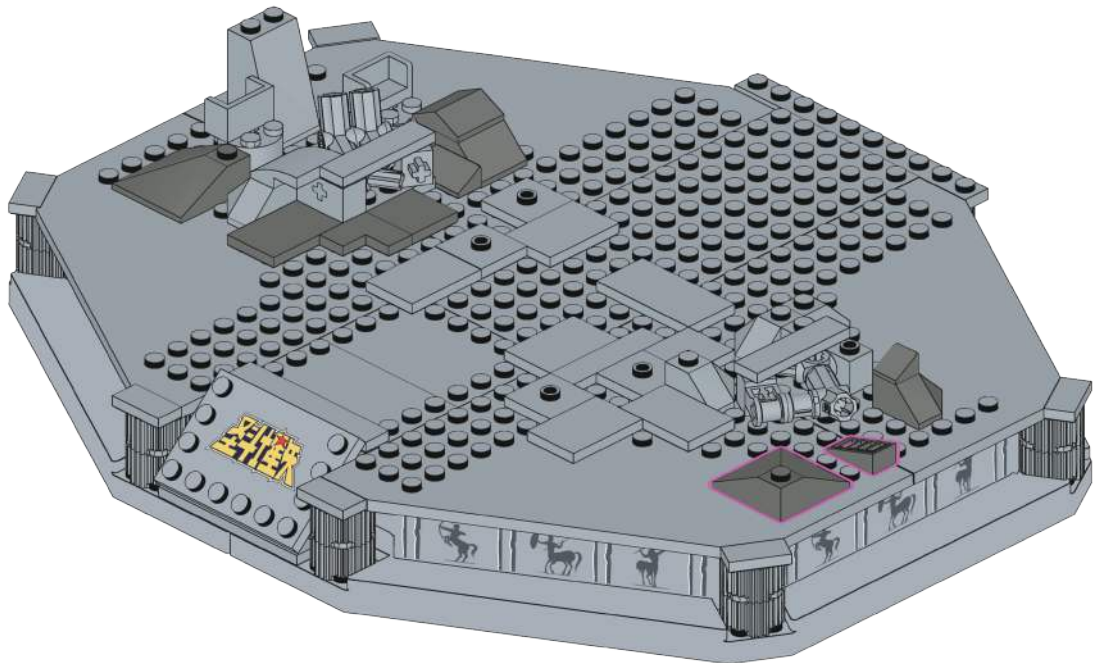


# 32

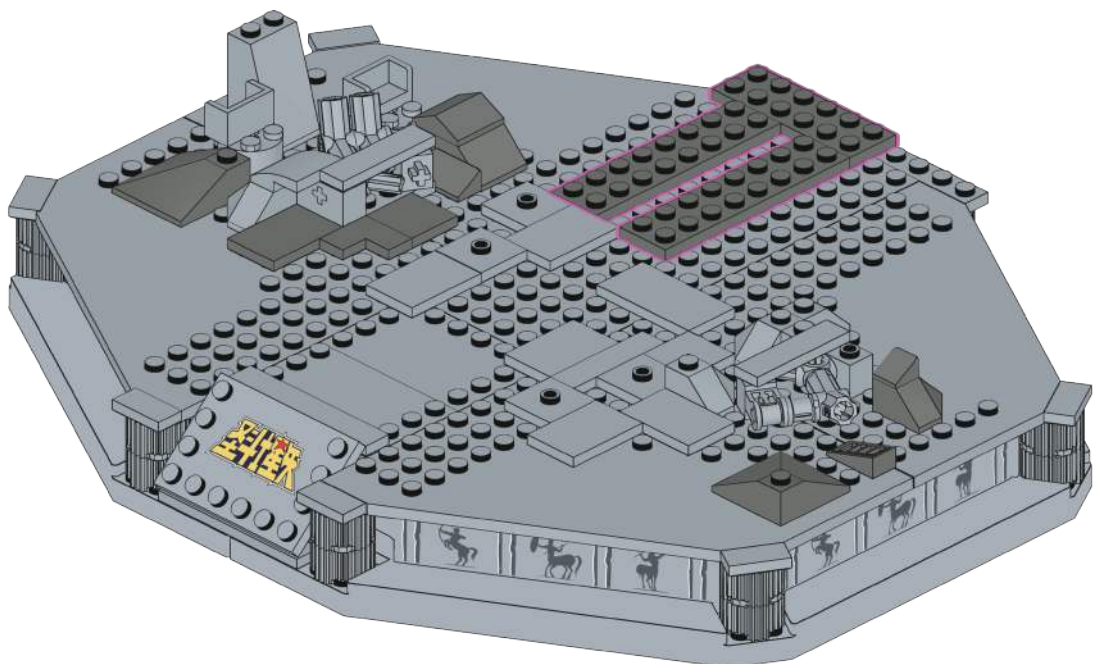


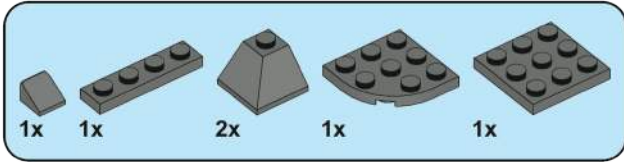


33

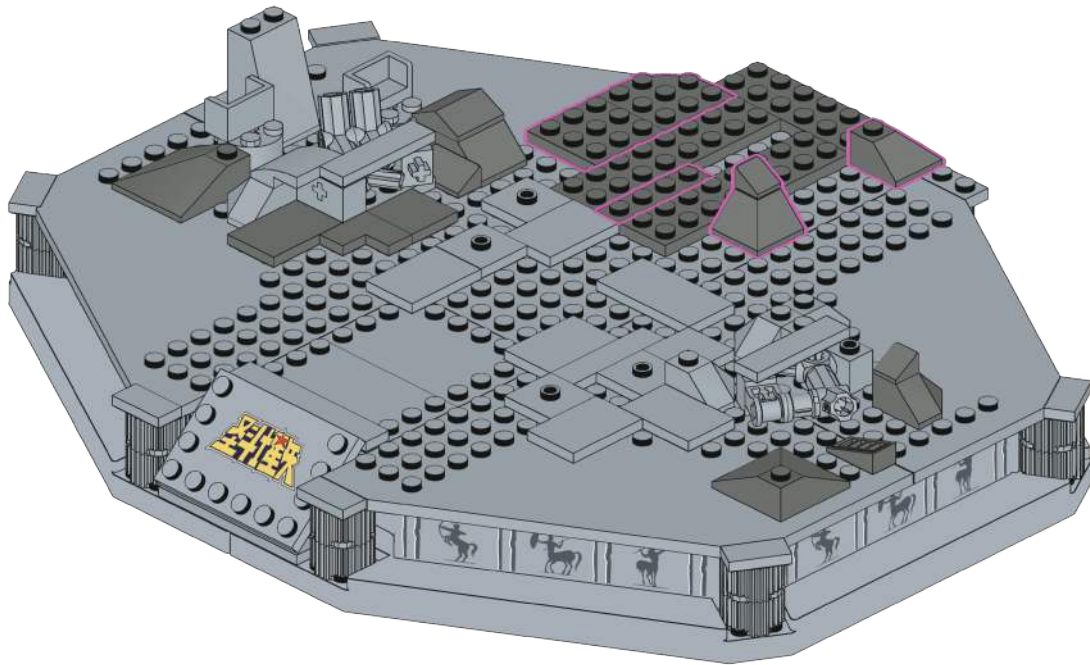


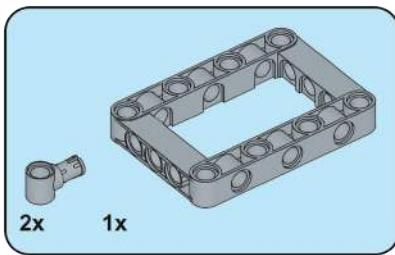
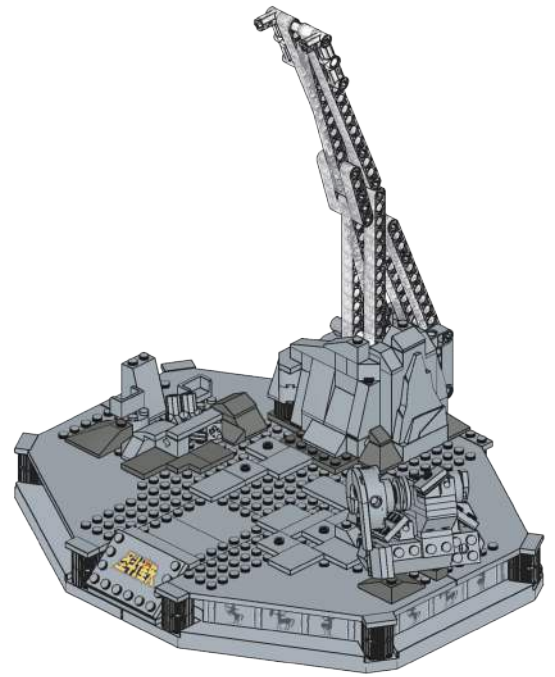
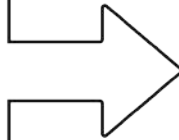
34



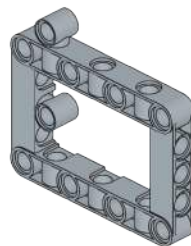
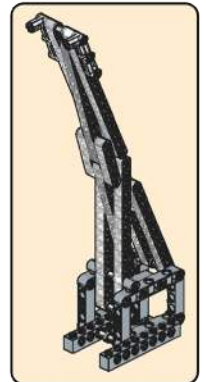


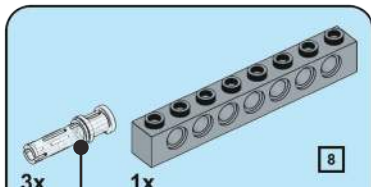
35





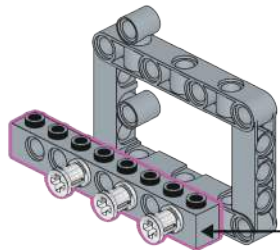
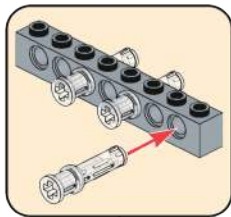
**36**



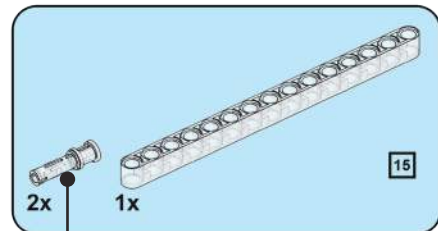
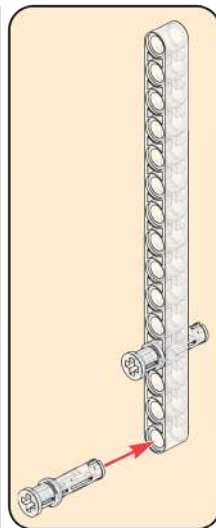


37

这是带十字轴孔长栓。

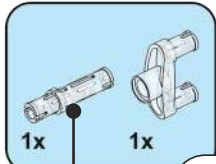
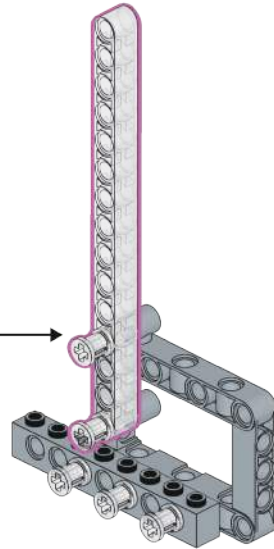


这是1:1零件比例尺, 可以用来比对零件长度。



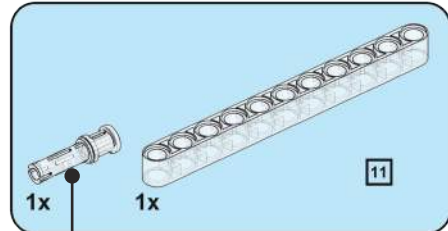
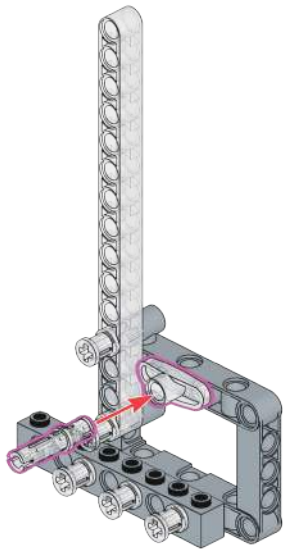
38

这是带十字轴孔长栓。



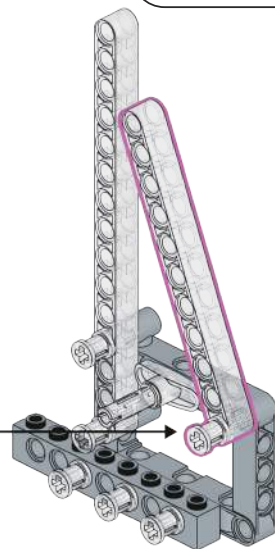
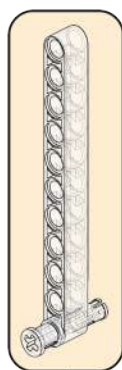
39

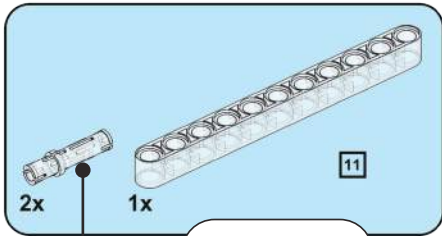
这是摩擦销长栓。



40

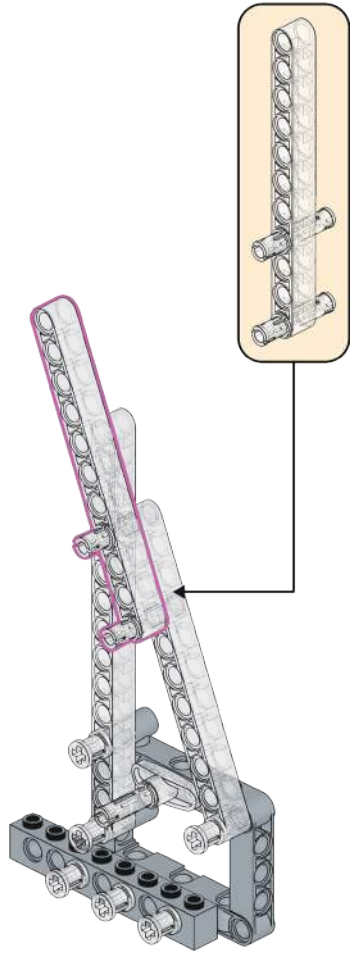
这是带十字轴孔长栓。





这是摩擦销长栓。

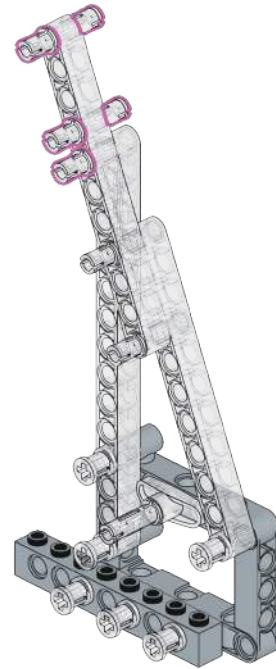
41

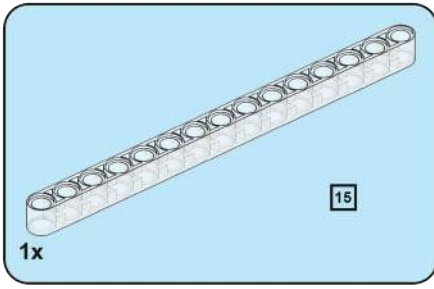


这是摩擦销长栓。

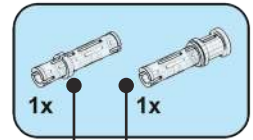
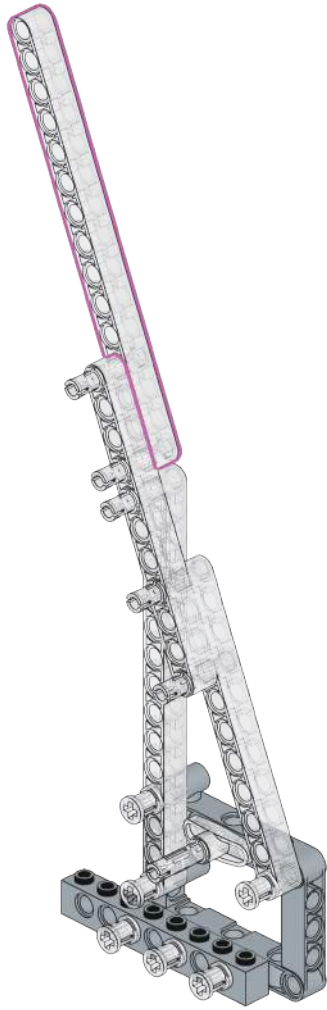
3x

42





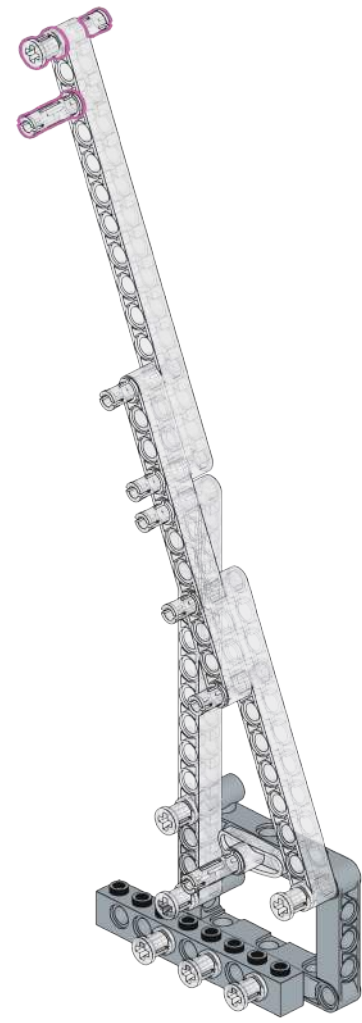
43

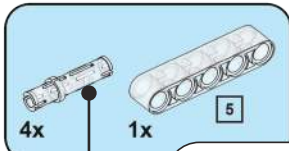


这是摩擦销长栓。

这是带十字轴孔长栓。

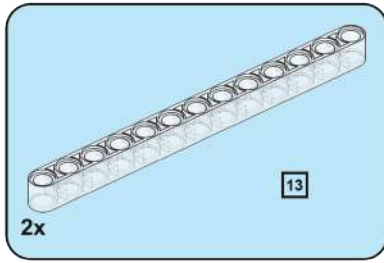
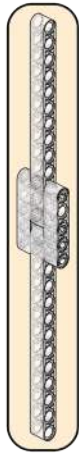
44



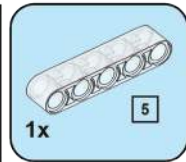


45

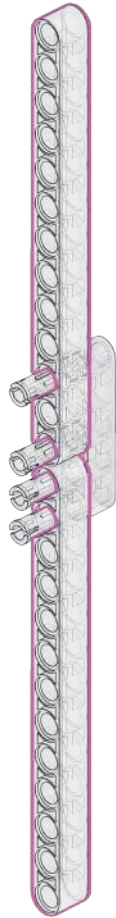
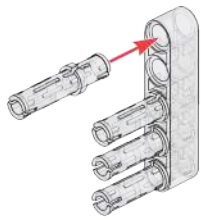
这是摩擦销长栓。



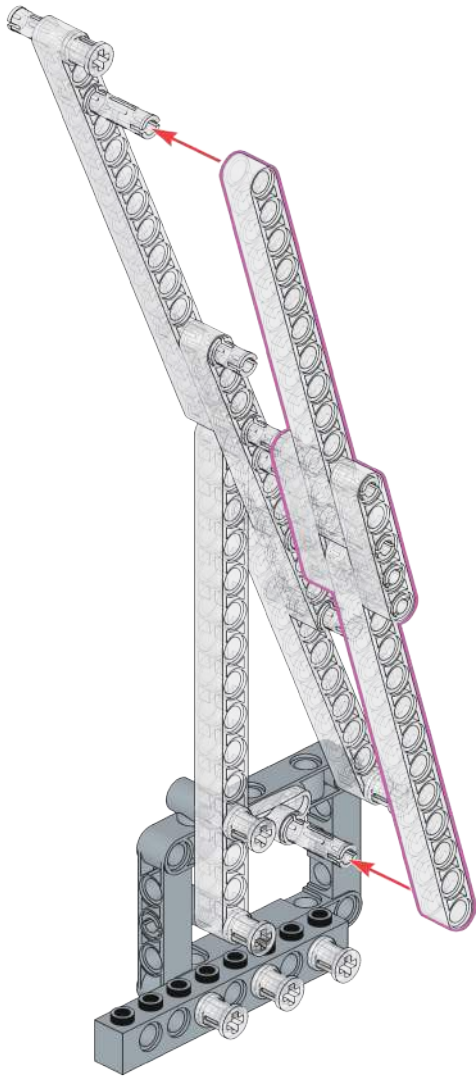
46



47

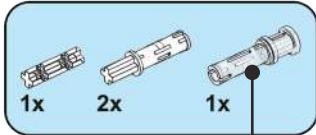


# 48



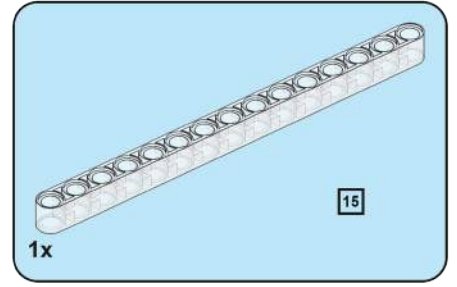
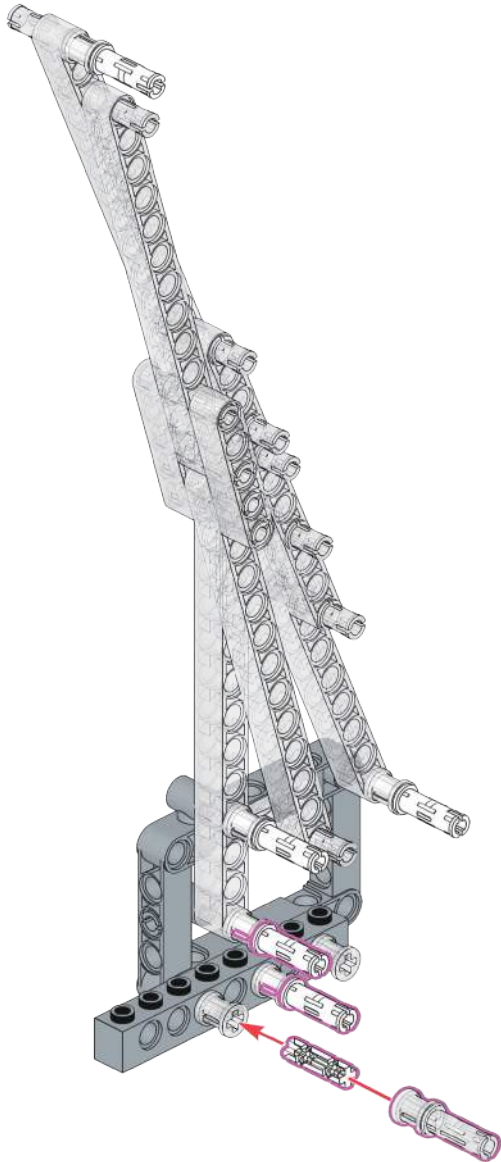
# 49





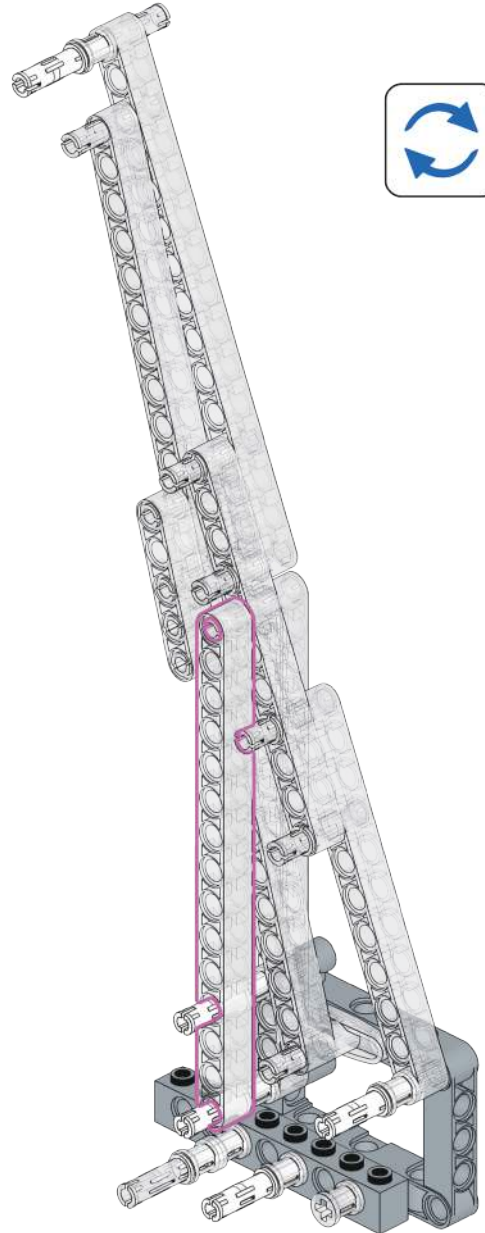
50

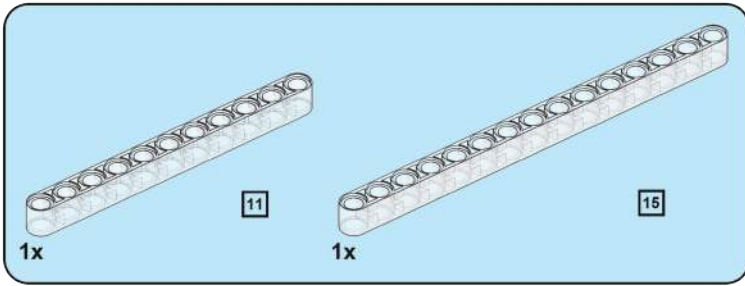
这是带十字轴孔长栓。



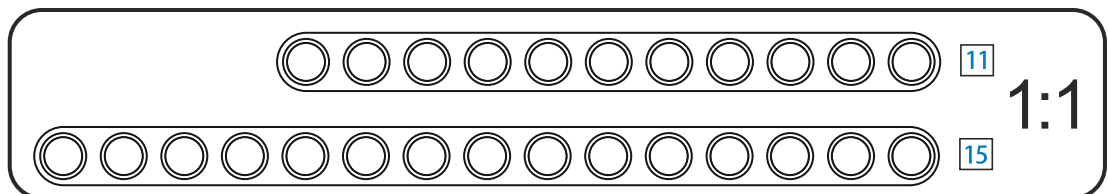
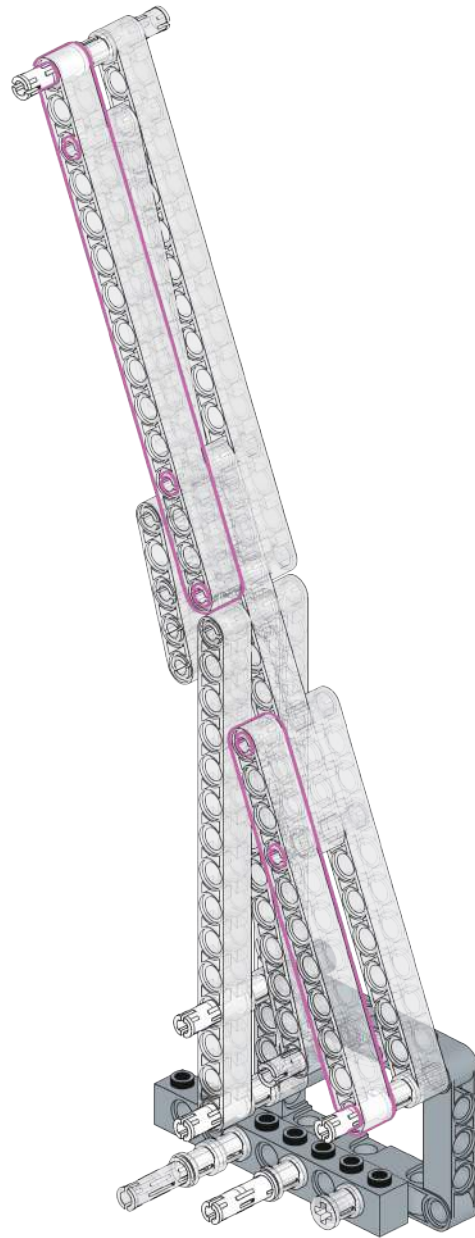
15

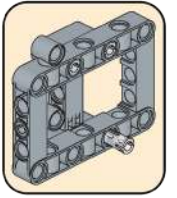
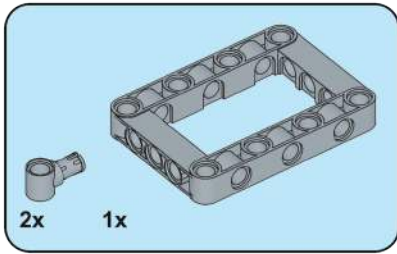
51



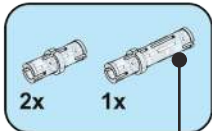
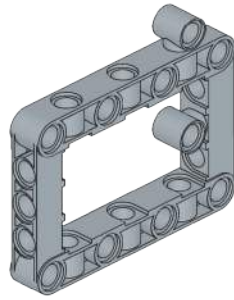


# 52



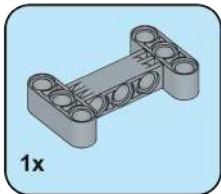
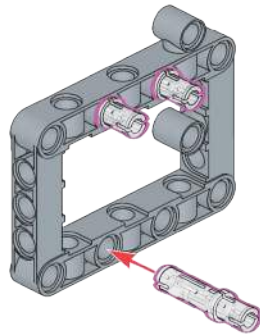


53

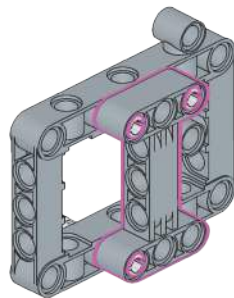


这是摩擦销长栓。

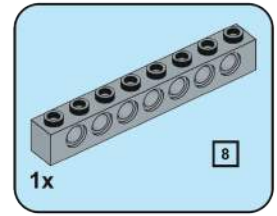
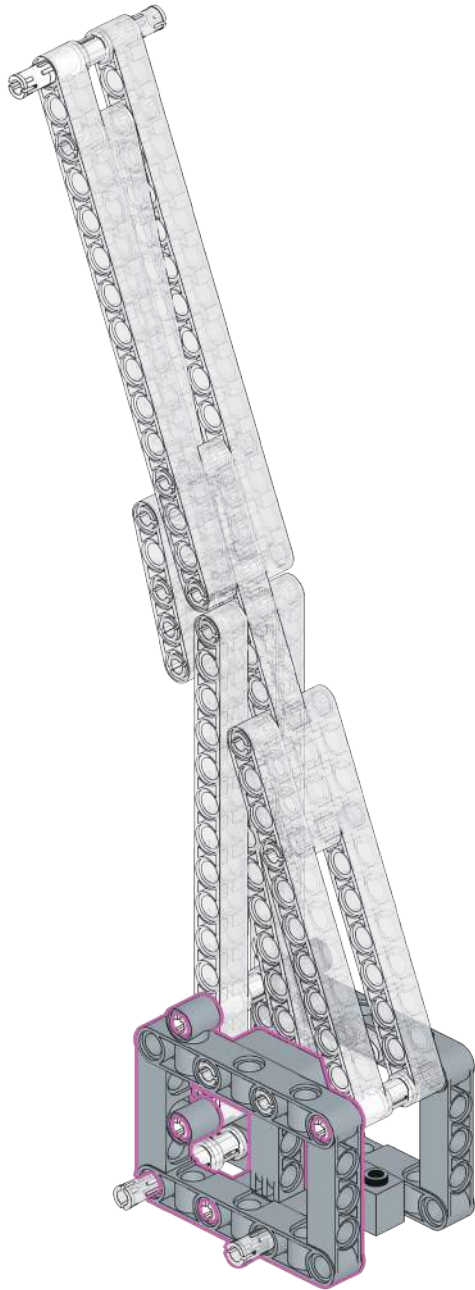
54



55



56



57

